



# Mercedes-Benz Trucks Genuine Parts with Midlands Truck and Van

for maintenance, wear and tear, drivetrain and accident

**Mercedes-Benz**  
Trucks you can trust



# Midlands Truck and Van Parts Division

## Meet the Management Team



**Eddie Lees**  
Regional Parts Development  
Manager

**07789 278 728**



**Keith O'Brien**  
Parts Business Development  
Executive

**07770 645 786**



**Richard Doughty**  
Birmingham Parts Manager

[richard.doughty@midlandstruckvan.com](mailto:richard.doughty@midlandstruckvan.com) | **07917 722 979**

1 Dorset Road, Birmingham, B8 1BG | **0121 326 4200**



**James Carolan**  
Coventry Parts Manager

[james.carolan@midlandstruckvan.com](mailto:james.carolan@midlandstruckvan.com) | **07791 182 683**

Wheler Road, Coventry, CV3 4LA | **02476 217266**



**Dawn Ball**  
Wolverhampton Parts Manager

[dawn.ball@midlandstruckvan.com](mailto:dawn.ball@midlandstruckvan.com) | **07917 722 981**

6 Sidings Close, Wolverhampton, WV11 3DR | **01902 867070**

Midlands Truck and Van are an approved Mercedes-Benz commercial vehicle dealership representing the West Midlands & Shropshire areas. We are proud to offer New Van & New Truck sales, Used Van & Used Truck sales and Aftersales solutions including 24hr servicing and parts availability. We are located at Birmingham, Coventry & Wolverhampton.

£2.5 million worth of stock  
16,600 individual lines  
12 delivery vans covering the Midlands  
24 hour servicing at our Wolverhampton branch



## Midlands Truck and Van Parts Department Phone Numbers



### Birmingham

[partsbham@midlandstruckvan.com](mailto:partsbham@midlandstruckvan.com)  
0121 326 4264

1 Dorset Road, Birmingham, B8 1BG



### Coventry

[partscov@midlandstruckvan.com](mailto:partscov@midlandstruckvan.com)  
02476 217268

Wheler Road, Coventry, CV3 4LA



### Wolverhampton

[partswill@midlandstruckvan.com](mailto:partswill@midlandstruckvan.com)  
01902 867070

6 Sidings Close, Wolverhampton,  
WV11 3DR





## Mercedes-Benz Genuine Parts

More than one hundred years of experience in vehicle and part development make our parts what they are - Mercedes-Benz Genuine Parts. They impress with the highest levels of quality and reliability, as well as tested safety - so that your Mercedes-Benz remains genuine forever.



### Advantages at a glance:

- The latest state of technical development and consistent quality assurance
- Pan-European warranty with long-term availability even after series-production period
- Global supply availability with short procurement times through efficient logistics
- Customer-oriented portfolio of genuine parts, remanufactured parts and repair solutions.
- Fulfillment of Mercedes-Benz requirements in terms of safety, economy and environmental protection





# Mercedes-Benz WebParts

The online ordering system Mercedes-Benz WebParts offers you\* the option to order Mercedes-Benz Genuine Parts easily and conveniently around the clock, 365 days a year, directly from your Mercedes-Benz partner.



Advantages at a glance:

- Clearly arranged, easy-to-operate user interface
- Vehicle-specific parts research in Mercedes-Benz parts catalog (EPC)
- Access to the full range of Mercedes-Benz Genuine Parts, Remanufactured Parts and Genuine Accessories
- Display of your own individual conditions as well as parts availability in your inquiry result
- Take advantage of the attractive sales campaigns of your Mercedes-Benz partner
- Orders for fleet owners can be processed through the SAP interface

\*Currently only available for corporate customers



## The new service innovation Mercedes-Benz Uptime

With intelligent networking of vehicles, Mercedes-Benz Service and your shipping company, Mercedes-Benz Uptime is setting new benchmarks. This enables significantly increased predictability of workshop visits and a greater availability of vehicles.



### Advantages at a glance:

- Avoiding vehicle breakdowns: preventing breakdowns and reducing organizational stress
- Efficient management of repair and maintenance work: minimizing workshop visits and non-operational times in the workshop
- Real-time support for customer repairs: avoiding unnecessary workshop visits and repair costs

More information at:

[www.mercedes-benz.com/uptime](http://www.mercedes-benz.com/uptime)

# Table of contents

Maintenance parts	7-9
Genuine Oil	10
Remanufactured parts	11-14
Wear and tear parts	15-20



# Maintenance parts

AdBlue filter, oil filter, engine filter, air filter, fuel filter and interior air filter





Filter

Engine filter sets



Part number	Model series	Engine
A 000 180 71 09	Actros 4, Antos, Arocs	OM471

Content		
A 473 180 00 09	Oil filter	
A 471 090 08 55	Fuel filter	
A 004 094 69 04	Air filter, Rear air intake, Regular maintenance interval	



Part number	Model series	Engine
A 000 180 72 09	Actros 4, Antos, Arocs	OM471

Content		
A 473 180 00 09	Oil filter	
A 471 090 08 55	Fuel filter	
A 004 094 68 04	Air filter, Rear air intake, Extended maintenance interval	



Part number	Model series	Engine
A 000 180 73 09	Axor 1-3	OM457

Content		
A 000 180 29 09	Oil filter	
A 541 090 01 51	Fuel main filter	
A 004 094 35 04	Air filter, Front air intake, rear air intake, Tandem air filter	

AdBlue filter



Part number	Model series	Description
A 000 142 10 89	Actros (new), Antos, Arocs, Actros 2-3, Atego (new)	Filter housing, frost compensating membrane, filter cartridge, Diameter: 75 mm, height: 101.9 mm

Product advantages of Mercedes-Benz genuine AdBlue® filter elements

- The high-quality polyamide filter provides optimum filtration results and ensures the lasting functionality of the AdBlue system.
- The AdBlue filter ensures the maintenance intervals of the exhaust gas aftertreatment systems.
- Reliably filters particles or impurities larger than >30 µ from the AdBlue.
- Exact fit in accordance with the Mercedes-Benz development specifications ensures ease of installation and optimum filter performance.






# Mercedes-Benz Oil

Mercedes-Benz oil is the optimal lubricant for Mercedes-Benz engines – designed by our engine developers. The result is an oil that corresponds to 100 % the requirements of a Mercedes-Benz – so that your Mercedes-Benz runs like lubricated.



Advantages at a glance:

- Lower mechanical friction to ensure excellent engine characteristics
- Ensures excellent engine performance
- Optimized fuel consumption
- Ensures the vehicle's longevity and performance

A close-up, artistic photograph of a Mercedes-Benz engine component, possibly a valve train part, with a key-shaped part inserted into it. The image is lit with a cool blue light, creating a high-tech, industrial feel. The Mercedes-Benz logo is visible on the key-shaped part.

Mercedes-Benz Genuine  
Remanufactured Parts.



## Genuine remanufactured parts. The key to a perfect price-performance ratio

Mercedes-Benz Remanufactured Parts guarantee Mercedes-Benz quality at attractive prices. In an extremely thorough procedure, each part is reconditioned, checked and tested according to the stringent Mercedes-Benz standards.

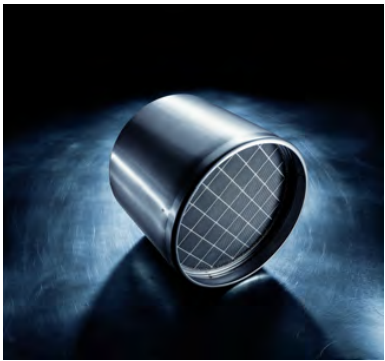
Advantages at a glance:

- Economic replacement part costs
- Guaranteed Mercedes-Benz quality
- Reliable availability
- Resource-saving manufacturing process





Remanufactured EUR6 diesel particulate filter



Part number	Model series	Engine
A 000 490 46 92 82	Actros 4, Atego 3, Antos, Arocs	OM 541/934
A 000 490 54 92 82	Arocs	OM 470
A 000 490 58 92 82	Actros 4, Arocs, Antos	OM 541
A 000 490 61 92 82	Atego 3, Arocs, Antos	OM 541/934
A 000 490 62 92 82	Actros 4, Arocs, Antos	OM 541
A 000 490 63 92 82	Actros 4, Atego 3, Antos, Arocs	OM 541/934
A 001 490 05 92 82	Actros 4, Antos, Arocs	OM 541
A 001 490 06 92 82	Actros 4, Atego 3, Antos, Arocs	OM 541/934
A 001 490 27 92 80	Arocs, Actros 4, Antos	HDEP OM470
A 001 490 28 92 80	Arocs, Actros 4, Antos	HDEP OM471 / 473
A 001 490 29 92 80	Arocs, Actros 4, Atego (new), Antos, Zetros, Econic	MDEG OM936
A 001 490 30 92 80	Arocs, Actros 4, Atego (new), Antos, Zetros, Econic	MDEG OM936
A 001 490 36 92 80	Atego (new), Unimog	MDEG OM934
A 001 490 37 92 80	Arocs, Actros 4, Atego (new), Antos, Zetros, Econic, Unimog	MDEG OM934/936
A 001 490 38 92 80	Arocs, Actros 4, Atego (new), Antos, Zetros, Econic	MDEG OM936
A 001 490 47 92 82	Arocs, Actros 4, Atego 3, Antos	OM 541/934
A 001 490 48 92 82	Arocs, Actros 4, Antos	OM 541
A 001 490 49 92 80	Atego (new), Unimog	MDEG OM934
A 001 490 50 92 80	Arocs, Actros 4, Atego (new), Antos, Zetros, Econic, Unimog	MDEG OM934/936
A 001 490 51 92 82	Arocs, Actros 4, Atego 3, Antos	OM 541/934
A 001 490 55 92 82	Arocs, Actros 4, Atego 3, Antos	OM 541/934

Maintenance

Remanufactured clutch sets



Content of parts kit	Pressure plate, clutch plate
----------------------	------------------------------

Part number	Model series
A 021 250 26 01 80	Arocs, Actros 1-4, Atego 1-3, Axor 1-3, Antos
A 021 250 36 01 80	Arocs, Actros 1-4, Atego 1-3, Axor 1-3, Antos
A 021 250 38 01 80	Atego 1-3
A 022 250 38 01 80	Arocs, Actros 1-4, Atego 1-3, Axor 1-3, Antos
A 025 250 23 01 80	Arocs, Actros 4, Antos
A 027 250 16 01 80	Arocs, Actros 3
A 027 250 18 01 80	Actros 3, Axor 3
A 027 250 20 01 80	Arocs, Actros 1-4, Atego 1-3, Axor 1-3, Antos
A 028 250 73 01 80	Atego 1-2
A 028 350 15 01 80	Arocs, Actros 1-4, Atego 1-3, Axor 1-3, Antos
A 028 250 17 01 80	Actros 4
A 028 250 25 01 80	Arocs, Actros 1-4, Atego 1-3, Axor 1-3, Antos

Wear

Product advantages of Mercedes-Benz genuine remanufactured clutch sets

- Produced according to strict Mercedes-Benz quality Standards.
- The genuine remanufactured clutch sets are adapted exactly to the respective power train. This guides to a comfortable start-up behavior, low wear as well as the absorption of noise and vibrations.



Clutch

Release bearing

Release bearing with cable



Part number	Model series	Version
A 002 250 57 15	Actros 1, Atego 2-3	Sensor cable length 290 mm
A 002 250 74 15	Actros 1-3, Atego 2-3	Sensor cable length: 165 mm
A 002 250 75 15	Actros 1-3, Atego 2-3	Sensor cable length: 220 mm
A 002 250 76 15	Atego 2-3	Sensor cable length: 220 mm

Release bearing without cable



Part number	Model series	Version
A 002 250 66 15	Atego 2-3	-
A 002 250 73 15	Actros 1, Atego 2-3	-

Wear

# Wear and tear parts

Brake, suspension, clutch, steering and wiper





Brake set



Part number	Version	Model series	Package contents
A 002 420 47 01	17.5" front axle	New Atego, Atego 1-3	2 brake disks and 1 brakepad set
A 002 420 48 01	17.5" rear axle	New Atego, Atego 1-3	2 brake disks and 1 brakepad set
A 002 420 49 01	17.5" rear axle	New Atego, Atego 1-3	2 brake disks and 1 brakepad set
A 002 420 50 01	17.5" rear axle	New Atego, Atego 1-3	2 brake disks and 1 brakepad set
A 002 420 51 01	19.5" front axle	New Atego, Atego 1-3	2 brake disks and 1 brakepad set
A 002 420 52 01	19.5" rear axle	New Atego, Atego 1-3	2 brake disks and 1 brakepad set
A 002 420 53 01	22.5" front axle up to MY 09/2010	Actros 1-3, Axor 1-3	2 brake disks and 1 brakepad set
A 002 420 54 01	22.5" rear axle up to MY 09/2010	Actros 1-3, Axor 1-3	2 brake disks and 1 brakepad set
A 000 421 31 12	22.5" front axle as of MY 10/2010	Actros 4, Antos, Arocs	2 brake disks and 1 brakepad set
A 000 421 32 12	22.5" front axle as of MY 10/2010	Actros 3	2 brake disks and 1 brakepad set
A 000 421 33 12	22.5" rear axle as of MY 10/2010	Actros 3-4, Antos, Arocs	2 brake disks and 1 brakepad set

Wear

Product advantages of Mercedes-Benz genuine brake set

- The parts package offers an attractive price advantage compared to separate parts.
- In the external packaging, the parts package includes two brake disks and a brakepad parts kit each.
- The friction pairing of genuine brake disk and genuine brakepad ensures a long service life (economic efficiency) and optimum braking characteristics (safety).
- The genuine brake disk and the genuine brakepads have been thoroughly tried and tested and technically released by the Mercedes-Benz development department.



Brake

Remanufactured brake caliper



Package contents	Without brake carrier and brakepads
------------------	-------------------------------------

Part number	Model series	Description
A 002 420 88 01 80	Actros 1-3, Atego 3, Axor 2	Right
A 002 420 90 01 80	Actros 1-4, Atego 3, Axor 2, Antos	Right
A 004 420 93 83 80	Arocs, Actros 1-4, Axor 1-3, Antos	Left, Pad width 248
A 004 420 94 83 80	Arocs, Actros 1-4, Axor 1-3, Antos	Right, Pad width 248
A 004 420 97 83 80	Arocs, Actros 1-4, Axor 1-3, Antos	Left, Pad width 245
A 004 420 98 83 80	Arocs, Actros 1-4, Axor 1-3, Antos	-
A 005 420 01 83 80	Arocs, Actros 1-4, Atego 1-3, Axor 1-3, Antos	Left, Pad width 208
A 005 420 02 83 80	Arocs, Actros 1-4, Atego 1-3, Axor 1-3, Antos	Right, Pad width 208
A 005 420 17 83 80	Atego 1-3	Left
A 005 420 18 83 80	Atego 1-3	Right

Product advantages of Mercedes-Benz genuine remanufactured brake calipers

- Optimum matching of the components has enabled a maximum in braking power to be achieved, leading to shorter braking distances and in turn to greater road safety.
- The highly-sensitive and precise braking effect and the resulting uniform response time relieve the strain on the driver.
- The brake components prevent any vibrations which in turn results in an enhanced noise comfort level.
- The high-quality surface alloy ensures the longevity of the genuine Mercedes-Benz remanufactured brake caliper.

Guide and gasket kits



Figure 1



Figure 2



Figure 3

Reference figure	Part number	Version	Model series
Fig. 1	A 000 420 22 82	Brake type SN7/SB7/SM7/SL7	Actros 1-4, Antos, Arocs, Axor 1-3
Fig. 2	A 000 420 43 82	Brake type SN6	Atego (new), Atego 2-3
Fig. 2	A 000 420 21 82	Brake type SB6	Atego 1
Fig. 3	A 000 420 41 82	Brake type SN5	Atego (new), Atego 2-3
Fig. 3	A 000 420 12 82	Brake type SB5	Atego 1

Product advantages of Mercedes-Benz genuine guide and gasket kits

- All parts required to perform the repair in one package.
- High-quality material selection for all parts, such as boot, brass bushings and pilot bushings or O-ring.
- Cap bolts with microencapsulation.

Wear





Brake

Air drier/Electronic Air-Processing Unit



Part number	Version	Description	Description	Model series
A 001 446 13 64	EAPU	Single air drier	Without heater	Actros 3
A 001 446 14 64	EAPU	Single air drier	With heater	Actros 3

Product advantages of Mercedes-Benz genuine air drier (electronic)

- The EAPU combines the pneumatics of decisive functions (air drier, 4-circuit protection valve, etc.) with an intelligent software control.
- Efficient utilization of vehicle deceleration phases and optimized regeneration cycles ensure a measurable reduction in fuel consumption.
- The EAPU is available with or without heating.

Suspension

Air spring bellows



Figure 1



Figure 2



Figure 3

Reference figure	Part number	Version	Connections	Jounce, max.	Rebound, max.	Model series
Fig. 1	A 942 320 29 21	Rear axle	Air and sensor connection	92 mm	225 mm	Actros 1-3, Axor 2-3
Fig. 2	A 942 320 30 21	Rear axle	Air connection	90 mm	170 mm	Atego (new), Atego 1-3
Fig. 2	A 942 320 43 21	Front axle (FA)	Air connection	85 mm	200 mm	Actros 1-3, Axor 2-3
Fig. 2	A 942 320 69 21	Rear axle	Air connection	90 mm	170 mm	Actros 1-3, Axor 2-3
Fig. 2	A 960 320 00 57	Rear axle	Air connection	125 mm	245 mm	Actros 4, Antos, Arocs
Fig. 3	A 960 320 18 17	Front axle	Air connection	187 mm	270 mm	Actros 4, Antos

Product advantages of Mercedes-Benz genuine air suspension bellows

- Perfect ride comfort and reliable transport of goods even at cold outside temperatures.
- The elastomers used can easily withstand permanent loads, cold or exposure to the sun and guarantee a long service life.
- Fast and easy assembly thanks to highest dimensional accuracy.



## Worldwide parts supply: Global Logistics Center

The hub of After-Sales logistics at Mercedes-Benz is the Global Logistics Center in Germersheim. In combination with the logistics centers all over the world, the Global Logistics Center provides for a speedy and smooth supply of service operations with parts and accessories for commercial vehicles from Mercedes-Benz and FUSO.



Our aim:

- Large range of products: More than 700,000 parts available for ordering, roughly 500,000 parts in store
- High availability of parts and order processing within 24 hours
- Parts availability many years after series-production discontinuation
- Fast supply of service operations worldwide through a global logistics network





On the information given in this catalog: Product changes may have been made following the last copy deadline of this catalog (03/2017). The manufacturer reserves the right to make changes to the design or form, to deviations in color and changes to the scope of supply during the delivery period if these changes or deviations can be deemed reasonable with respect to the buyer while taking into account the interests of the seller. If the seller or manufacturer uses characters or numbers to designate the order or object of purchase ordered, no rights may be derived from this.

The illustrations may also show accessories and special equipment which are not part of the standard scope of supply. Deviations in color are due to the printing process. This catalog may also contain models and services which are not offered in certain countries. Information given regarding statutory regulations, legal requirements and taxation applies only to the Federal Republic of Germany as known at the copy deadline of this catalog. Therefore please ask your Mercedes-Benz salesperson about the last binding publication status.

[www.mercedes-benz.com](http://www.mercedes-benz.com)