



The Mercedes-Benz eCitan.

Electric Panel and Crew van models.

Prices effective from January 2025.

Mercedes-Benz



[RETURN TO START](#)

Contents

> Summary	3
> Enhanced Safety	4
> The eCitan BASE	5
> The eCitan PRO	6
> The eCitan SELECT	7
> The eCitan CREW	8
> List price summary	9
> Mercedes-Benz finance options	10
> Equipment overview	11
> Colours and upholstery	16
> Charging information	17
> Technical data	18
> Dimensions	20
> The Mercedes-Benz App	23
> Mercedes-Benz Vans and the environment	24
> Approved used	25
> Integrated Service Package (ISP)	26
> Service 24: Demand more	27

Please note

This document provides information about the model range line-up and specifications of the eCitan. It also contains key details about options, economy and performance of all variants. Details are correct at time of publication and are subject to revision without notice. Any images used in this document may not reflect UK specification and are for illustrative purposes only. Images may show optional equipment which does not form part of UK standard specification.

The Mercedes-Benz eCitan.



RETURN TO START

2 van models:	Panel van – 2 seats and Crew van – 5 seats
1 charging configuration:	AC: 22kW with DC: 75kW**
2 vehicle lengths:	L1 or L2 (Crew van available in L2 only)
3 trim levels:	BASE, PRO or SELECT (available on panel vans only)

Combined WLTP ranges:
165 – 176 miles (266 – 283km*)

Charging times:*

• AC 11kW

0 -100% in 4.5 hours

• AC 22kW

0 -100% in 2.5 hours

• DC 75kW

up to 80% in 38 minutes



eCitan BASE

eCitan PRO

eCitan SELECT

eCitan CREW



CCS rapid charging port, 75kW max. capacity.



MBUX with 9.5-inch touch screen



Safety and Driver Assistance Systems.

Electrical WLTP range for the eCitan Panel Van range in miles (km): 165 (266) – 176 (283). Electrical consumption in kWh/100 km: 19.0 – 20.6 Combined CO₂ emissions in g/km: 0.

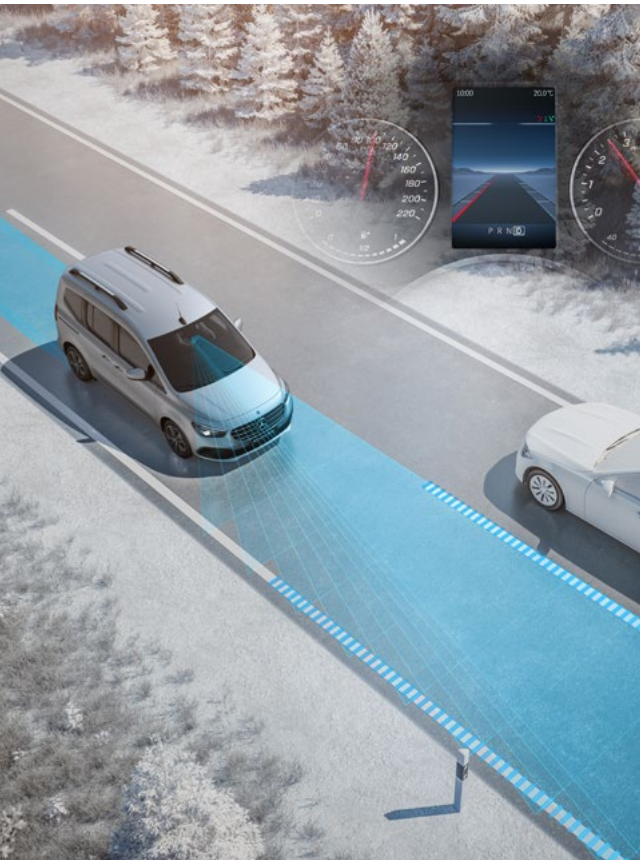
Figures correct as of August 2024 The indicated values were determined according to the prescribed measurement method – Worldwide Harmonised Light Vehicle Test Procedure (WLTP). Battery Electric Vehicles (BEV) require mains electricity for charging, range figures determined with the battery fully charged. Figures shown are for comparability purposes; only compare with other cars tested to the same technical procedure (WLTP). Figures may not reflect real life driving results, which will depend upon a number of factors including the starting charge of the battery, factory-fitted options, accessories fitted (post registration), variations in weather, driving styles and vehicle load. Further information about the test used to establish range, power consumption and CO₂ figures can be found at <http://www.mercedes-benz.co.uk/WLTP>. For real time data visit https://voc.mercedes-benz.com/voc/gb_en. **Charging times are subject to the power available at the location where the vehicle will be charged as well as external factors such as temperature and type of cable and charger used.

Enhanced Safety.



RETURN TO START

The eCitan is based on a sophisticated safety concept. Active driving assistance and safety systems offer useful functions to support the driver. A significantly expanded standard range of assistance systems is available.



Active Lane Keeping Assist (JB4)
The Lane Keeping Assist function can help to prevent accidents caused by the vehicle unintentionally leaving its lane. If the system detects that the vehicle has drifted out of its lane unintentionally and warns the driver by means of a pulsating vibration of the steering wheel. This prompts the driver to return to the correct lane.



Active Brake Assist (BA3)
Can help you prevent accidents with vehicles in front and with crossing vehicles or pedestrians, or to minimise the consequences of such accidents. This can increase both your own safety and that of other road users.



ATTENTION ASSIST (JQ2)
The ATTENTION ASSIST system can give you timely warning of fatigue and microsleep. Contributes to road safety, especially when driving at night and on longer journeys. The display appears in the instrument cluster between the rev counter and speedometer.



Hill-Start Assist (E07)
Can ease moving off on gradients by temporarily preventing the vehicle from rolling backwards. Hill Start Assist is linked to the Electronic Stability Program ESP® and maintains brake pressure for a few seconds after the service brake is released.



Traffic Sign Assist (JQ1)
Assists you in maintaining the legally prescribed maximum permissible speed. A camera in the windscreen detects speed limits which you then have the option to adopt. So you have less to regulate yourself and can benefit from more comfort.

The eCitan BASE.

Standard features include:

Interior

- Multifunction steering wheel
- Height and rake adjustable steering wheel
- Glove compartment with cover, co-driver's side
- Height adjustable driver's seat with lumbar support
- Height adjustable co-driver's seat
- Mirror in driver's sunblind
- THERMOTRONIC automatic climate control
- Seat heating for driver and co-driver
- Heated windscreen

Exterior

- Sliding door left (and right on L2s)
- Heated and electrically adjustable exterior mirrors
- 16-inch steel wheels
- Double-wing rear door without window, opening 180 degrees
- Halogen headlamps

Safety and Driver Assistance Systems

- KEYLESS starting
- Rearview camera
- Rear parking aid
- Active Lane Keeping Assist
- Traffic Sign Assist
- Active Brake Assist
- Tyre pressure monitoring front/rear, wireless
- Driver and co-driver's airbag
- ATTENTION ASSIST
- Hill-Start Assist
- Alarm and double locks

Technology

- MBUX multimedia system with 9.5 inch display
- Smartphone Integration package
- Cruise Control
- 5m charging cable, mode 3 (type 2, 3x32A)
- AC charging 22kW/DC charging 75kW
- Pre-entry climate control

From £32,700* List price exc VAT

* Based on an eCitan Van L1 BASE.

2 lengths available

- L1: 4,613mm
- L2: 4,922mm

Arrange a test drive at your nearest Dealership

* Vehicle purchase price is calculated on base vehicle only (excluding any optional equipment), it excludes delivery charges and first registration fee. The grant will be applied after any vehicle discount has been offered and includes VAT and number plate costs. The OZEV plug-in van grant approval is expected during October 2024. For more information, visit: <https://www.gov.uk/plug-in-car-van-grants>



Government OZEV grant of up to £2,500

The eCitan is eligible for a Government OZEV grant that gives businesses 35% off the purchase price, up to a maximum of £2,500*.



The Mercedes-Benz eCitan 5

eCitan summary	Enhanced Safety	eCitan BASE	eCitan PRO	eCitan SELECT	eCitan CREW	List prices	Finance options	Equipment	Charging information	Technical data	Dimensions	Mercedes-Benz App	Approved used	ISP	Service 24h
----------------	-----------------	-------------	------------	---------------	-------------	-------------	-----------------	-----------	----------------------	----------------	------------	-------------------	---------------	-----	-------------

The eCitan PRO.

Upgrade from BASE to PRO to get all of the additional equipment listed below:

Interior

- LED Interior lighting
- Electric front windows with one-touch operation
- Armrest with stowage compartment

Exterior

- Sliding door rail cover in vehicle colour
- Exterior mirrors, electric folding and adjustment
- 16-inch 5-twin-spoke design wheels on L1 (Steel wheels with cover on L2)
- Front fog lamps

Load Area

- LED lighting in load compartment
- Plastic flooring in load compartment

Safety and Driver Assistance Systems

- Blind Spot Assist

From £35,000* List price exc VAT

* Based on an eCitan Van L1 PRO.

2 lengths available

- L1: 4,613mm
- L2: 4,922mm

▶ Arrange a test drive at your nearest Dealership

* Vehicle purchase price is calculated on base vehicle only (excluding any optional equipment), it excludes delivery charges and first registration fee. The grant will be applied after any vehicle discount has been offered and includes VAT and number plate costs. For more information, visit: <https://www.gov.uk/plug-in-car-van-grants>



Government OZEV grant of up to £2,500

The eCitan is eligible for a Government OZEV grant that gives businesses 35% off the purchase price, up to a maximum of £2,500*.



The Mercedes-Benz eCitan

The eCitan SELECT.

Upgrade from PRO to SELECT to get all of the additional equipment listed below:

Interior

- Interior Design package
- Chrome interior package
- High-gloss black dashboard trim element
- Leather steering wheel and shift lever knob

Exterior

- LED High Performance headlamps
- 16-inch 10-spoke light-alloy wheels on L1 (16-inch light-alloy multi spoke wheels on L2)
- LED Fog lamps
- Metallic paint
- Painted bumpers

Safety and Driver Assistance Systems

- Highbeam Assist
- Active parking assist
- KEYLESS-GO

From £36,940* List price exc VAT

* Based on an eCitan Van L1 SELECT.

2 lengths available

- L1: 4,613mm
- L2: 4,922mm

▶ Arrange a test drive at your nearest Dealership

* Vehicle purchase price is calculated on base vehicle only (excluding any optional equipment), it excludes delivery charges and first registration fee. The grant will be applied after any vehicle discount has been offered and includes VAT and number plate costs. For more information, visit: <https://www.gov.uk/plug-in-car-van-grants>



RETURN TO START

Government OZEV grant of up to £2,500

The eCitan is eligible for a Government OZEV grant that gives businesses 35% off the purchase price, up to a maximum of £2,500*.



The Mercedes-Benz eCitan

The eCitan CREW.

Standard features include:

Interior

- LED interior lighting
- Electric front windows with one-touch operation
- Hinged windows in sliding doors
- FOLD & LOAD rear bench seat with flexible partition wall and protective grille
- Multifunction steering wheel
- Height and rake adjustable steering wheel
- Glove compartment with cover, co-driver's side
- THERMOTRONIC automatic climate control

Exterior

- Sliding door rail cover in vehicle colour
- Exterior mirrors heated and electronically adjustable
- 16-inch steel wheels
- Front fog lamps
- Sliding door left and right with window
- Double-wing rear door without window, opening 180 degrees
- Halogen headlamps

Load Area

- LED lighting in load compartment
- Plastic flooring in load compartment

Safety and Driver Assistance Systems

- Blind Spot Assist
- KEYLESS starting
- Rearview camera
- Rear parking aid
- Active Lane Keeping Assist
- Traffic Sign Assist
- Active Brake Assist
- Tyre pressure monitoring front/rear, wireless
- Driver and co-driver's airbag
- ATTENTION ASSIST
- Hill-Start Assist
- Alarm and double locks

Technology

- MBUX multimedia system with 9.5 inch display
- Smartphone Integration package
- Cruise Control
- 5m charging cable, mode 3 (type 2, 3x32A)
- AC charging 22kW/DC charging 75kW
- Pre-entry climate control

From £35,815* List price exc VAT

* Based on an eCitan Crew van L2.

1 length available

- L2: 4,922mm

➤ [Arrange a test drive at your nearest Dealership](#)



The Mercedes-Benz eCitan 8

eCitan summary	Enhanced Safety	eCitan BASE	eCitan PRO	eCitan SELECT	eCitan CREW	List prices	Finance options	Equipment	Charging information	Technical data	Dimensions	Mercedes-Benz App	Approved used	ISP	Service 24h
----------------	-----------------	-------------	------------	---------------	-------------	-------------	-----------------	-----------	----------------------	----------------	------------	-------------------	---------------	-----	-------------

List Price Summary.


[RETURN TO START](#)

Vehicle Model Description	Powertrain	CO ₂ emissions, WLTP	Basic Recommended Retail Price (Ex. VAT)	Total Recommended Retail Price (Inc. VAT)
eCitan Van L1 BASE	Battery electric vehicle, FWD, 90kW Motor, Electric range 176 miles† WLTP combined	0g/km	£32,700	£39,240
eCitan Van L1 PRO	Battery electric vehicle, FWD, 90kW Motor, Electric range 175 miles† WLTP combined	0g/km	£35,000	£42,000
eCitan Van L1 SELECT	Battery electric vehicle, FWD, 90kW Motor, Electric range 175 miles† WLTP combined	0g/km	£36,940	£44,328
eCitan Van L2 BASE	Battery electric vehicle, FWD, 90kW Motor, Electric range 167 miles† WLTP combined	0g/km	£33,890	£40,668
eCitan Van L2 PRO	Battery electric vehicle, FWD, 90kW Motor, Electric range 168 miles† WLTP combined	0g/km	£36,190	£43,428
eCitan Van L2 SELECT	Battery electric vehicle, FWD, 90kW Motor, Electric range 165 miles† WLTP combined	0g/km	£38,130	£45,756
eCitan Crew Van L2	Battery electric vehicle, FWD, 90kW Motor, Electric range 162 miles† WLTP combined	0g/km	£35,815	£42,978

† Technical data of the eCitan in this publication are preliminary values and were determined internally in accordance with the WLTP certification methods. There are currently no confirmed values from TÜV, nor is there an EC type approval or a certificate of conformity with official values. Deviations between this data and the official values are possible. UK range figures may vary and these will be published when available.

Government OZEV grant of up to £2,500

The eCitan is eligible for a Government OZEV grant that gives businesses 35% off the purchase price, up to a maximum of £2,500*.



* Vehicle purchase price is calculated on base vehicle only (excluding any optional equipment), it excludes delivery charges and first registration fee. The grant will be applied after any vehicle discount has been offered and includes VAT and number plate costs. For more information, visit: <https://www.gov.uk/plug-in-car-van-grants>

This document is for guidance only and must be used in conjunction with a configuration tool prior to final specification decisions and vehicle quotations being prepared and accepted. List prices are quoted ex-factory unless otherwise stated. Delivery charges excluding VAT will be added to model prices quoted in this document. Prices based on standard finish paint choice. Mercedes-Benz Vans UK and authorised Dealers reserve the right to alter specification and vary prices without notice. The availability of options may depend on the chosen base vehicle and other optional equipment specified, and should be confirmed with your Mercedes-Benz Vans Dealer prior to order placement. VAT is calculated at the standard rate of 20%. Mercedes-Benz Vans UK Ltd, Tongwell, Milton Keynes MK15 8BA.

The Mercedes-Benz eCitan

9

Mercedes-Benz Finance options.

Choose an agreement that suits you with Mercedes-Benz Finance.

At Mercedes-Benz Finance we understand what it takes to run a modern-day business. Because of this, we have a number of finance options ready to suit your business needs.

Agility (Personal Contract Plan)

Agility (Personal Contract Plan) is our most flexible method of financing. You drive the vehicle over a fixed term, with fixed monthly payments. And at the end of the agreement, you decide whether you want to:

- Buy another Mercedes-Benz.
- Purchase your van by paying the Optional Purchase payment (balloon) and Option to Purchase Fee.
- Return it to us.

As a business customer, your vehicle can also appear as an asset on your balance sheet.

[For more information about Agility.](#)

Hire Purchase

A straightforward route to ownership. This product allows you to spread the overall cost of your Mercedes-Benz over a fixed term.

As a business customer, your vehicle can also appear as an asset on your balance sheet.

[For more information on Hire Purchase.](#)

Operating Lease

A solution for those who want to drive one of our vehicles over a specific term, with fixed monthly rentals and without the commitment of ownership of the vehicle.

As a business customer, your vehicle can also appear as an asset on your balance sheet.

[For more information on Operating Lease.](#)

Contract Hire

A solution for those who want to drive one of our vans over a specific term, with fixed monthly rentals and without the need to commit to ownership of the vehicle. This includes the cost of your Vehicle Excise Duty (also known as Road Fund Licence) for the duration of your agreement.

As a business customer, your vehicle can also appear as an asset on your balance sheet.

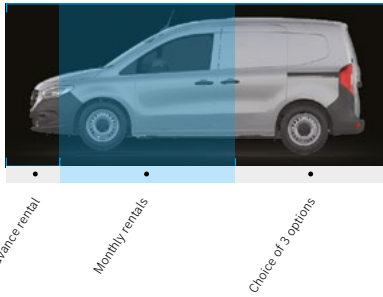
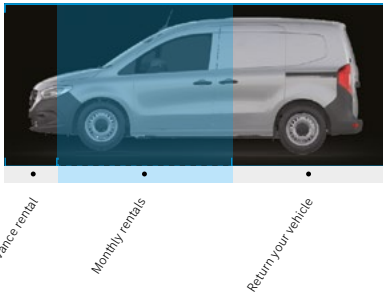
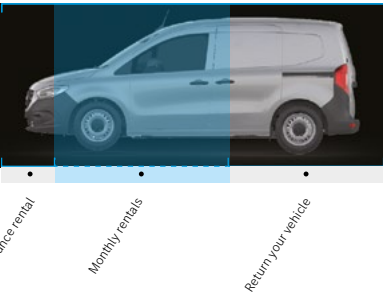
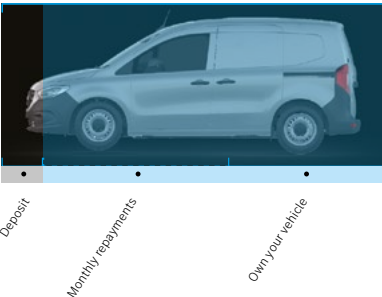
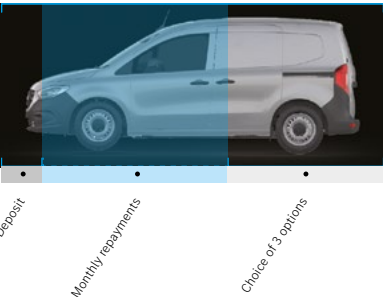
[For more information on Contract Hire.](#)

Finance Lease

Finance Lease gives you the ability to enjoy driving a Mercedes-Benz Van for a fixed time without the option of ownership. With this option you lease your vehicle for a fixed period and for fixed monthly rentals.

As a limited company or PLC customer, your vehicle can also appear as an asset on your balance sheet.

[For more information on Finance Lease.](#)



▶ [For more information about our finance options](#)

Equipment (standard and optional overview).

[RETURN TO START](#)

Every eCitan model comes with a host of standard features, plus a range of optional equipment and packages you can add to enhance your van.

Key: ● Standard ○ Optional — Not available

Category	Option Description	Option code	BASE	PRO	SELECT	CREW	Basic Price exc. VAT	Basic Price inc. VAT
Charging								
Cable	Charging cable for domestic mains socket	E0L	○	○	○	○	£215.00	£258.00
	Charging cable, mode 3 (type 2, 3x32A, 22kW) 5m	E2K	●	●	●	●	—	—
Power	Selection of recuperation levels	E1W	●	●	●	●	—	—
	AC charging 22 kW / DC charging 75 kW	E2J	●	●	●	●	—	—
Drivetrain								
Gearbox	Automatic gearbox for electric drive	GA2	●	●	●	●	—	—
Exterior Features								
Doors	Sliding door right (standard on L2s)	T16	○	○	○	—	£0.00	£0.00
	Sliding door right with window	T17	○	○	○	●	£445.00	£534.00
	Sliding door left	T19	●	●	●	—	—	—
	Sliding door left with window	T20	—	—	—	●	—	—
	Sliding door rail cover in vehicle colour	T78	—	●	●	●	—	—
	Rear door, double-wing, 180 degrees, w/o window	W50	●	●	●	●	—	—
	Tailgate (not available on BASE L2)	W65	○	○	○	—	£150.00	£180.00
	Colour glazing in rear, black glass (not available on BASE L2)	W70	○	○	○	○	£90.00	£108.00
	Window in tailgate/rear door with wipe/wash system (not available on BASE L2)	W78	○	○	○	○	—	—
Lighting	Front fog lamps	L16	○	●	—	●	£145.00	£174.00
	Fog lamps in LED technology	L23	—	○	●	○	£160.00	£192.00
	Light Package (including: LED High Performance headlamps (LG7), Highbeam Assist (LA1), and Front foglamps)	LB6	○	○	○	○	£845.00	£1,014.00
	LED High Performance headlamps	LG7	○	○	●	○	£730.00	£876.00
	Headlamps featuring halogen technology	L12	●	●	—	●	—	—

Changes to individual option availability and combinations may occur depending on vehicle specification choices and the continuing evolution and adaptation of our product range. These changes may not be immediately reflected in this document as they occur, but will be introduced at the next revision opportunity.

Equipment (standard and optional overview).


[RETURN TO START](#)

Category	Option Description	Option code	BASE	PRO	SELECT	CREW	Basic Price exc. VAT	Basic Price inc. VAT
Exterior Features (cont.)								
Tyres	All-season tyres	RM0	○	○	○	—	£180.00	£216.00
	Tyres without name of make	RD9	●	●	●	●	—	—
	Summer tyres	RM7	●	●	●	●	—	—
	Spare wheel (available on L2s only)	R87	○	○	○	—	£95.00	£114.00
Wheels	40.6 cm (16-inch) 10-spoke light-alloy wheels (available on L1s only)	R2C	○	○	●	—	£540.00	£648.00
	40.6 cm (16-inch) steel wheels with wheel hub caps	R2D	●	—	○	●	£60.00	£72.00
	40.6 cm (16-inch) steel wheels with wheel trims (available on L2s only)	R2E	○	●	○	○	£140.00	£168.00
	40.6 cm (16-inch) 5-twin-spoke design wheels (available on L1s only)	R2F	○	●	○	—	£315.00	£378.00
	40.6 cm (16-inch) multi-spoke light-alloy wheels (available on L2s only)	R2H	○	○	●	○	£550.00	£660.00
Paint	Painted bumper	CMO	—	○	●	○	£185.00	£222.00
	Metallic paint	No code	○	○	●	○	£455.00	£546.00
Interior Features								
Floor	All-weather floor mats	V3L	○	○	○	—	£35.00	£42.00
	Plastic flooring in passenger compartment, front	V4V	●	●	●	●	—	—
Heating and Ventilation	Pre-entry climate control	H1K	●	●	●	●	—	—
	THERMOTRONIC automatic climate control	HH4	●	●	●	●	—	—
Lighting	Interior lighting in LED technology	LL1	—	●	●	●	—	—
Mirrors	Mirror in driver's sunblind	F58	●	●	●	●	—	—
Seats	Seat heating for driver and co-driver	H10	●	●	●	—	—	—
	Seat comfort package	SA8	●	●	●	—	—	—
	i-Size child seat securing system	SD1	●	●	●	—	—	—
	Driver's seat, height-adjustable w/lumbar support	SF6	●	●	●	—	—	—
	Co-driver's seat, height-adjustable	SL2	●	●	●	—	—	—
	Driver's seat, height-adjustable	SL3	—	—	—	●	—	—
	Co-driver's seat	SL1	—	—	—	●	—	—

● Standard ○ Optional — Not available

Changes to individual option availability and combinations may occur depending on vehicle specification choices and the continuing evolution and adaptation of our product range. These changes may not be immediately reflected in this document as they occur, but will be introduced at the next revision opportunity.

Equipment (standard and optional overview).


[RETURN TO START](#)

Category	Option Description	Option code	BASE	PRO	SELECT	CREW	Basic Price exc. VAT	Basic Price inc. VAT
Interior Features (cont.)								
Steering	Steering wheel heating	CK8	—	—	○	○	£140.00	£168.00
	Multifunction steering wheel	C6L	●	●	●	●	—	—
	Height and rake adjustable steering wheel	CL1	●	●	●	●	—	—
	Leather steering wheel	CL3	—	—	●	—	—	—
Storage	Armrest with stowage compartment	FG1	○	●	●	—	£100.00	£120.00
	Glove compartment, co-driver's side, closed	FQ3	●	●	●	●	—	—
Trim	Shift lever knob, leather	C1J	—	—	●	—	—	—
	High-gloss black dashboard trim element	FI9	—	—	●	—	—	—
	Chrome interior appointments package	FP4	—	—	●	—	—	—
	Interior Design package	PX9	—	—	●	—	—	—
	Norwich black fabric	VH4	●	●	●	—	—	—
	Caluma black fabric	VF4	—	—	—	●	—	—
Window	Heat-insulating glass all round	H20	●	●	●	●	—	—
Technology								
Audio Entertainment	Navigation package	E1K	○	○	○	○	£690.00	£828.00
	Wireless charging system for mobile devices	E10	○	○	○	—	£180.00	£216.00
	Navigation Plus	EX8	○	○	○	○	£780.00	£936.00
	Digital radio (DAB)	E1D	●	●	●	●	—	—
	MBUX multimedia system with 9.5-inch display	E30	●	●	●	●	—	—
	Smartphone Integration package	E4S	●	●	●	●	—	—
	Pre-install.: Remote and Charging Services Premium	EW5	●	●	●	●	—	—
	Pre-installation: Remote and Navigation Services	EW8	●	●	●	●	—	—
	Pre-installation: Live Traffic Information	EY2	●	●	●	●	—	—
	Breakdown management	EY6	●	●	●	●	—	—

● Standard ○ Optional — Not available

Changes to individual option availability and combinations may occur depending on vehicle specification choices and the continuing evolution and adaptation of our product range. These changes may not be immediately reflected in this document as they occur, but will be introduced at the next revision opportunity.

Equipment (standard and optional overview).


[RETURN TO START](#)

Category	Option Description	Option code	BASE	PRO	SELECT	CREW	Basic Price exc. VAT	Basic Price inc. VAT
Technology (cont.)								
Driver assistance	KEYLESS starting	FX7	●	●	—	●	—	—
	KEYLESS-GO	FX9	—	—	●	—	—	—
	Instrument cluster with colour display	JK5	●	●	●	●	—	—
	Cruise control	MS1	●	●	●	●	—	—
Safety and Driver assistance								
Airbags	Automatic co-driver airbag deactivation	SK5	○	○	○	—	£45.00	£54.00
	Airbag, driver and co-driver	SA4	●	●	●	●	—	—
	Thorax-sidebags and windowbags, front	SH5	●	●	●	●	—	—
Brake	Electrical parking brake	B25	●	●	●	●	—	—
Driver assistance	Active Brake Assist	BA3	●	●	●	●	—	—
	Hill-Start Assist	E07	●	●	●	●	—	—
	Highbeam Assist	LA1	○	○	●	○	£160.00	£192.00
	Active Parking Assist	EZ7	—	—	●	○	—	—
	Rear parking aid	F2U	●	●	—	●	—	—
	Windscreen, heated	F49	●	●	●	●	—	—
	Reversing camera	FR8	●	●	●	●	—	—
	Active Lane Keeping Assist	JB4	●	●	●	●	—	—
	Blind Spot Assist	JP7	—	●	●	●	—	—
	Traffic Sign Assist B	JQ1	●	●	●	●	—	—
	ATTENTION ASSIST B	JQ2	●	●	●	●	—	—
Maintenance	Maintenance package	JE1	●	●	●	●	—	—
Safety	First aid kit	Y10	○	○	○	○	£20.00	£24.00
	Warning triangle	Y44	○	○	○	○	£20.00	£24.00
	TIREFIT	RR7	●	●	●	●	—	—
	Tyre pressure monitoring front/rear, wireless	RY2	●	●	●	●	—	—

● Standard ○ Optional — Not available

Changes to individual option availability and combinations may occur depending on vehicle specification choices and the continuing evolution and adaptation of our product range. These changes may not be immediately reflected in this document as they occur, but will be introduced at the next revision opportunity.

Equipment (standard and optional overview).


[RETURN TO START](#)

Category	Option Description	Option code	BASE	PRO	SELECT	CREW	Basic Price exc. VAT	Basic Price inc. VAT
Safety and Driver assistance (cont.)								
Security	Double Lock	FY2	●	●	●	●	—	—
	Alarm – NOT Thatcham Approved	FZ5	●	●	●	●	—	—
Mirrors and Windows								
Mirrors	Folding exterior mirrors, heated and electronically adjustable	F59	—	●	●	○	£130.00	£156.00
	Exterior mirrors, heated and electronically adjustable	F68	●	—	—	●	—	—
Window	Front side windows, electr. w/ one-touch operation	FE3	—	●	●	●	—	—
Load Area								
Floor	Plastic flooring in boot/load compartment	V29	○	●	●	●	£90.00	£108.00
	Wood flooring	V43	○	○	○	—	£265.00	£318.00
	Load space int. trim up to roof (wood)	VA2	○	○	○	—	£300.00	£360.00
Lighting	Load compartment lighting in LED technology	LE2	—	●	●	●	£45.00	£54.00
Loading and Towing								
Bulkhead	Full-width partition with window	D51	○	○	○	—	£70.00	£84.00
	Full-length partition	D50	●	●	●	—	—	—
Towing	Trailer coupling, rigid coupling head	Q22	○	○	○	—	£505.00	£606.00
Weight	Weight variant 2230 kg (only available on L1s)	X0X	●	●	●	—	—	—
	Weight variant 2490 kg (only available on L2s)	XH6	●	●	●	—	—	—
	Weight variant 2580 kg	X3Z	—	—	—	●	—	—

● Standard ○ Optional — Not available

Changes to individual option availability and combinations may occur depending on vehicle specification choices and the continuing evolution and adaptation of our product range. These changes may not be immediately reflected in this document as they occur, but will be introduced at the next revision opportunity.

Colours and upholstery.

Solid Paints



Arctic white
(Standard on BASE and PRO)



Lorándite red*



Nosean blue*



Magnetite grey*

Metallic Paints



Helvite silver metallic
(Standard on SELECT)
* Option



Limonite yellow metallic*



Chromite grey metallic*

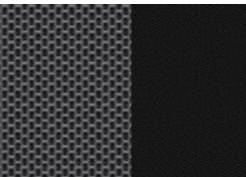


Loparite black metallic*

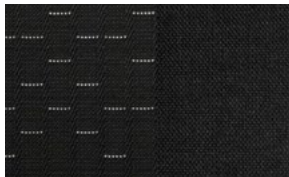


Cavansite blue metallic*

Interior upholstery



Norwich Black seat upholstery



Caluma Black seat upholstery
(Standard on CREW)

Due to limitations of on-screen representation, the vehicle colours may differ in reality to the on-screen images.

Charging Information.

Increasing efficiency and reducing downtime.

➤ **The eCitan can be charged by Direct Current (DC) or Alternating Current (AC).**

AC is usually found at homes and workplaces and more cost effective for charging, however, generally requires longer intervals to fully charge. DC power can rapid-charge an electric vehicle using higher charging powers. For example, the eCitan can accept 75kW of power.

- AC 11kW 0-100% in ~4.5 hours (Wallbox)[†]
- AC 22kW 0-100% in 2.5 hours[†]
- DC 75kW 10-80% in just 38 minutes[†].

➤ **Managing range and battery performance.**

The eCitan uses a process called recuperation that recovers energy when the vehicle is decelerating to help recharge the vehicle's battery. There are 3 recuperation modes available, which can be adjusted via the steering-wheel paddles. The greater the recuperation level, the faster you decelerate and therefore, the more energy your vehicle will recover. An automatic mode is also fitted as standard, which uses the radar-sensor to intelligently select the best mode for a given driving situation.

- D-

This mode will enable you to get maximum range from your eCitan. It has maximum recuperation and fastest deceleration. Due to the deceleration being so strong, your vehicle will automatically activate your brake lights when you lift off the accelerator.
- D

This mode has less recuperation than D- and has similar deceleration levels to a diesel Citan.
- D+

This mode has significantly lower recuperation levels and therefore will decelerate at a slower rate than a diesel Citan. D+ is a coasting mode, meaning your vehicle will have no recuperation and can 'sail' for example when driving for long periods downhill.

[†] Charging times are subject to the power available at the location where the vehicle will be charged as well as factors such as temperature, charge point and type of cable used.
[^] Mercedes-Benz research analysed 1.6 million journeys anonymously on the EQ Ready app and 96% of all journeys recorded were shorter than 100km (62 miles).



Did you know the average van across the UK and Europe travels less than 62 miles[^] a day?



The Mercedes-Benz eCitan 17

Technical Data – Battery and e-Motor.



RETURN TO START

System specifications

Fuel	Electric
Output, max.	122bhp
Output, max.	90kW
Drive	FWD
Battery Composition	Li Ion
Battery Capacity	45kWh

Battery Voltage	400
Battery Charging	AC: 22kW/DC: 75kW
Battery Charging Time	AC 11kW 0-100% -4.5 hours (Wallbox)/ DC 10-80% – 38 min @75kW
Max Torque (Nm)	245
Service Interval	1 year/25,000 miles
Battery Capacity Warranty	8 years/100,000 miles



Technical Data – Range and Energy Consumption, WLTP.


[RETURN TO START](#)

Range, WLTP (km/miles)

Model	Combined (km/miles)	Low to Medium (km/miles)
eCitan Van L1 BASE	283/176	403/250
eCitan Van L1 PRO	282/175	401/249
eCitan Van L1 SELECT	282/175	400/249
eCitan Van L2 BASE	268/167	369/229
eCitan Van L2 PRO	271/168	369/229
eCitan Van L2 SELECT	266/165	365/227
eCitan Crew Van L2	261/162	352/219

Energy Consumption, WLTP (kWh/100km)

Model	Combined	Low (Extra Urban)	Medium (Urban)	High (Rural)	Extra High (Motorway)
eCitan Van L1 BASE	19.0	12.5	13.8	16.8	26.5
eCitan Van L1 PRO	19.1	12.6	13.9	16.9	26.5
eCitan Van L1 SELECT	19.1	12.6	13.9	16.9	26.5
eCitan Van L2 BASE	20.5	13.7	15.3	18.2	27.8
eCitan Van L2 PRO	20.2	13.8	15.3	17.9	27.1
eCitan Van L2 SELECT	20.6	13.9	15.4	18.3	27.9
eCitan Crew Van L2	21.1	14.4	16.0	18.7	28.3

The indicated values were determined according to the prescribed measurement method – Worldwide Harmonised Light Vehicle Test Procedure (WLTP). Battery Electric Vehicles (BEV) require mains electricity for charging, range figures determined with the battery fully charged. Figures shown are for comparability purposes; only compare with other cars tested to the same technical procedure (WLTP). Figures may not reflect real life driving results, which will depend upon a number of factors including the starting charge of the battery, factory-fitted options, accessories fitted (post registration), variations in weather, driving styles and vehicle load. Further information about the test used to establish range, power consumption and CO₂ figures can be found at <http://www.mercedes-benz.co.uk/WLTP>. For real time data visit https://voc.mercedes-benz.com/voc/gb_en.

Technical Data – Payload and Weights.

Model	Kerb Weight with Driver (Kg)*	Gross Vehicle Weight (Kg)	Payload (Kg)	Gross Combination Weight (Kg)
eCitan Van L1 BASE	1,782	2,230	448	3,500
eCitan Van L1 PRO	1,800	2,230	430	3,500
eCitan Van L1 SELECT	1,802	2,230	428	3,500
eCitan Van L2 BASE	1,874	2,490	616	3,500
eCitan Van L2 PRO	1,887	2,490	603	3,500
eCitan Van L2 SELECT	1,897	2,490	593	3,500
eCitan Crew Van L2	1,946	2,580	634	3,500

* Based on a driver weight of 75kg.

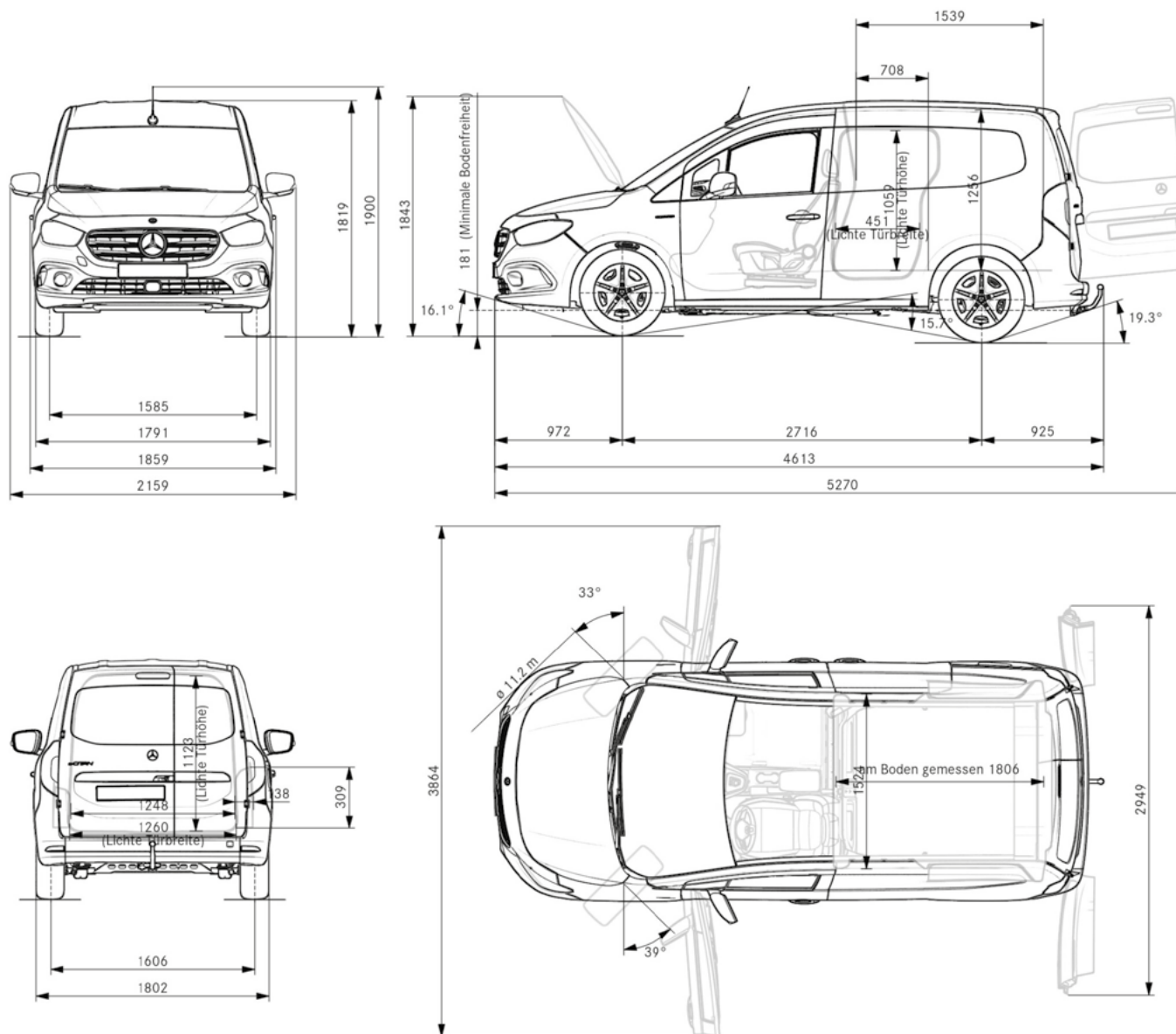
All weights and dimensions quoted are subject to normal manufacturing tolerances of +/- 5%. Stated weight figures in accordance with Directive 97/27/EC in the applicable version at the time of going to print. Stated weight figures are for UK supplied vehicles and include charging cable and all standard equipment. The figures are not based on an individual vehicle and do not constitute part of the product offer; they are provided solely for the purposes of comparison between different vehicle models. The payload figures depend on the optional equipment fitted to the vehicle, please contact your Mercedes-Benz Retail Partner for an individual vehicle calculation. Payload figures include the standard mode3 charging cable (5kg).

Dimensions.


[RETURN TO START](#)

PANEL VAN - BASE/PRO/SELECT L1

Wheelbase	Wheelbase length	2,716mm
	Turning circle	11.2m
	Front track width	1,585mm
	Rear track width	1,606mm
Vehicle	Length	4,498mm
	Height (unladen)	1,900mm
	Width (inc. wing mirrors)	2,159mm
	Ground clearance	181mm
Load compartment	Length	1,806mm
	Load volume	2.9m ³
	Max. width	1,524mm
	Width between wheel arches	1,260mm
	Height	1,256mm

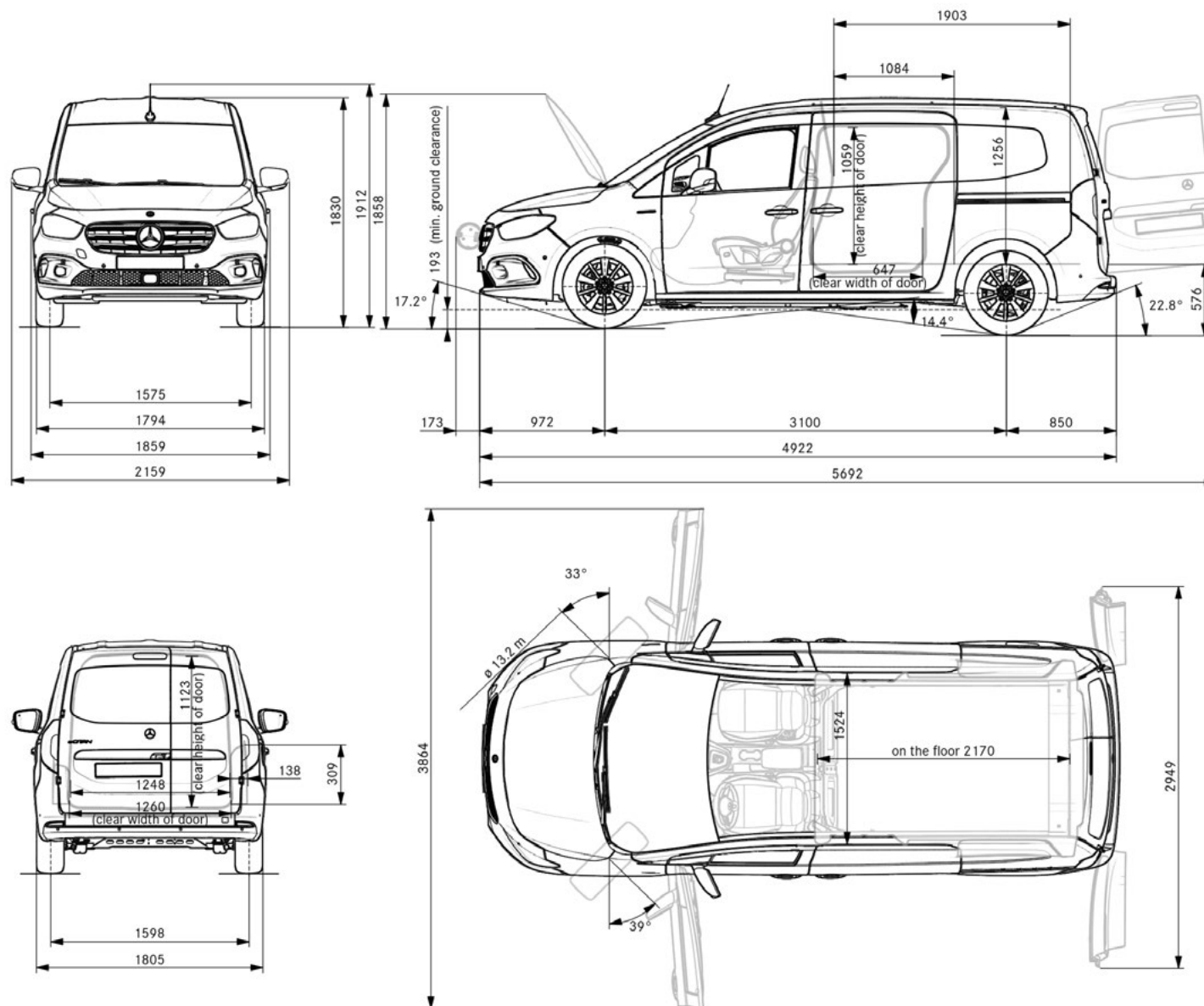


Dimensions.


[RETURN TO START](#)

PANEL VAN - BASE/PRO/SELECT L2

Wheelbase	Wheelbase length	3,100mm
	Turning circle	13.2m
	Front track width	1,575mm
	Rear track width	1,598mm
Vehicle	Length	4,922mm
	Height (unladen)	1,912mm
	Width (inc. wing mirrors)	2,159mm
	Ground clearance	193mm
Load compartment	Length	2,170mm
	Load volume	3.62m ³
	Max. width	1,524mm
	Width between wheel arches	1,260mm
	Height	1,256mm

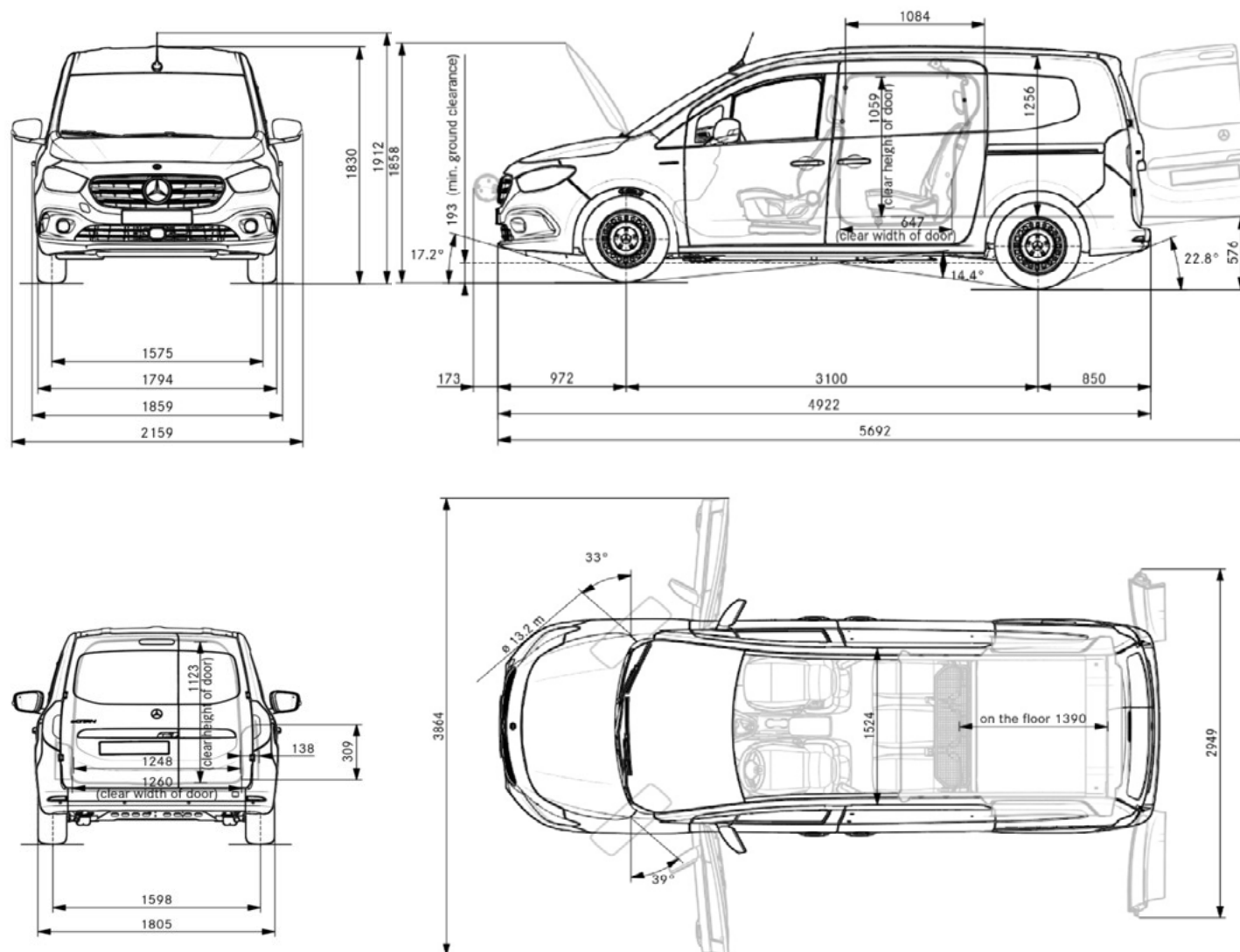


Dimensions.


[RETURN TO START](#)

CREW VAN - L2

Wheelbase	Wheelbase length	3,100mm
	Turning circle	13.2m
	Front track width	1,575mm
	Rear track width	1,598mm
Vehicle	Length	4,922mm
	Height (unladen)	1,912mm
	Width (inc. wing mirrors)	2,159mm
	Ground clearance	193mm
Load compartment	Length	1,390mm
	Load volume	3.25m ³
	Max. width	1,524mm
	Width between wheel arches	1,260mm
	Height	1,256mm



The Mercedes-Benz App.



RETURN TO START

Monitor your van's status, location and security via your smartphone.

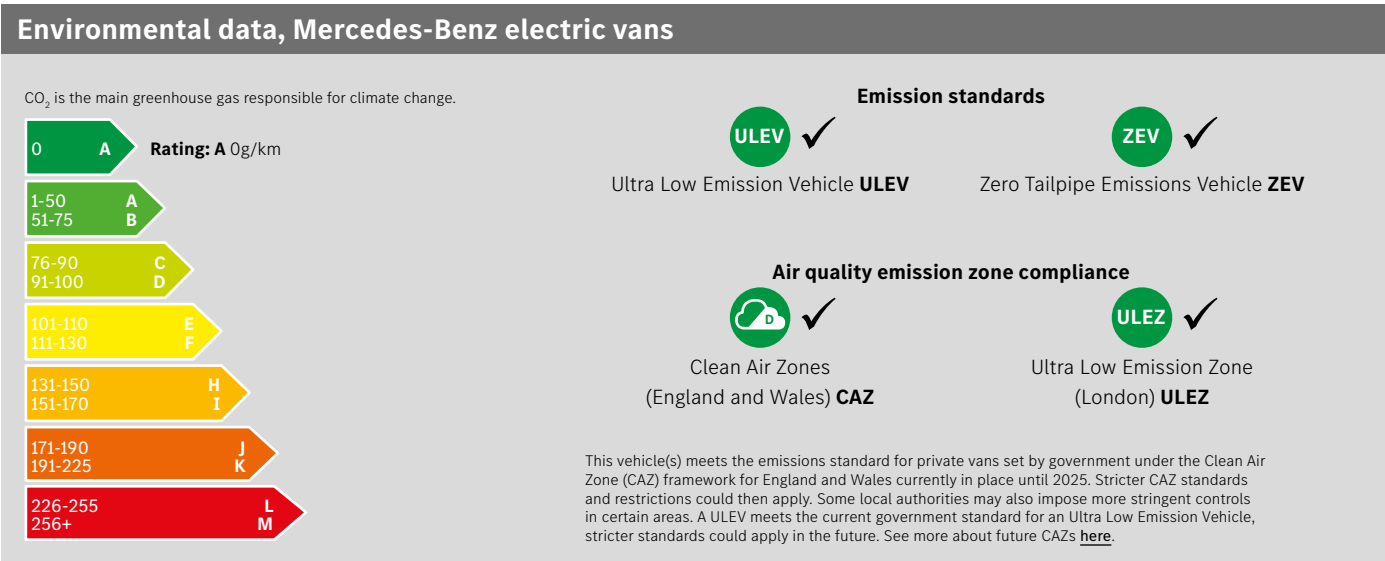


ASSISTANCE & AFTERCARE		FREE
Telediagnosics & Maintenance Management	Receive a notification when wear is detected on diagnostic-capable parts such as brake pads and get advance notice of when a service is due allowing you to plan your workshop visit well in advance to minimise any impact on your business.	
Remote Vehicle Diagnostics	Your Dealer can assess your van's condition remotely allowing them to check if any other repairs are required ahead of a service.	
Accident Recovery & Breakdown Management	Once an emergency call has been resolved or if you request breakdown assistance, further support is offered to help recover your van or to tow it to a Mercedes-Benz Service outlet.	
Software updates	Over-the-air software updates are sent directly to your van's head unit. This means you'll always know your software is up to date and you'll save time by avoiding additional workshop visits.	
VEHICLE SUPERVISION		FREE FOR 3 YEARS
Vehicle Tracker	See your van's location on the map in your app, making it easy to call or message your driver and re-route them to fit in another delivery or pick-up if a quicker route is available. The tracker is factory fitted equipment so it can't be easily removed if stolen.	
Parked Vehicle Locator	If you're within 1 mile of your van's parked location, the app can generate the most convenient walking route – very handy if you're in unfamiliar surroundings and on a busy schedule.	
REMOTE ACCESS		FREE FOR 3 YEARS
Remote Retrieval of Vehicle Status	Use your app to check on charge level, tyre pressure, mileage and trip information. Not only does this help you plan your day's journeys, it can save you admin time on tasks such as logging your mileage for expenses.	
Remote Door Locking & Unlocking	The app allows you to check if your van is locked. If you lock your keys in the van or need to give another driver access, you can do it via the app, from any distance away. For added peace of mind, you'll receive an email notification when your vehicle is unlocked.	
EV SERVICES		FREE
Pre-Entry Climate Control	Climate control can be started remotely when your van is charging so energy used for heating will draw on the mains power to avoid depleting your battery. This means you'll have maximum comfort and battery range.	
Display of Charging Stations & Range on map	The Mercedes-Benz App shows you charging stations in the surrounding area and enables you to set the preferred one as your destination. The range display in your app helps you plan a journey with confidence as it shows if you can reach your destination using your existing battery range.	

Mercedes-Benz Electric Vans and the Environment.

A key advantage of any battery electric vehicle (BEV) is it's positive environmental impact, compared to an internal combustion (ICE) vehicle. Mercedes-Benz electric vans produce no tailpipe emissions.

See right for the Energy Efficiency Rating and emission standards compliance.



Ambition 2039

A core element of our sustainable business strategy is Ambition 2039, with which we already set the course in 2019 for a holistic approach to climate protection and air pollution control.

The ambition is to make our entire fleet of new vehicles net carbon-neutral along the entire value chain and over the vehicles' entire life cycle by 2039 – from development to the supplier network, in-house production, electrification of products to renewable energies in the use phase of electric vehicles and recycling of the vehicles to close the loop.



Mercedes-Benz Approved Used Electric vans.

Get used to more...

More choice. More confidence. More quality – and more added extras.

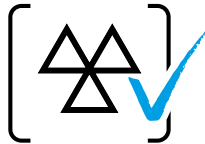
As a Mercedes-Benz Approved Used Electric customer, you'll have complete peace of mind as every van offers the same commitment to quality and workmanship as new and comes with:



12-24 month warranty option*



Free MOT test failure cover**
covering you for £1,500



Minimum
3 months MOT



Free 24/7 breakdown cover
and roadside assistance^



Comprehensive
multi-point vehicle check



Discounted
service plans

*Warranty eligible up to 200,000 miles on approved used Mercedes-Benz Vans with less than 150,000 miles at point of sale. For full T&Cs, please speak to your preferred sales representative. ** MOT cover redeemable per 12-months warranty. £1,500 claims limit. For more information, please speak to your preferred sales representative. ^ Free for 12 months initially and renewed at each service, if serviced by MB according to service intervals for up to 30 years from when the vehicle was first registered. For a full list of exclusions and all product terms please visit mbvans.co.uk/mobilovan For full terms and conditions, please consult your local Dealer. Mercedes-Benz Van Insurance is a trading name of Mercedes-Benz Insurance Services UK Limited. Prices are correct at time of going to press 01/2025. All prices are subject to any fiscal or legislative changes.



Approved
Used
Electric



What is an Approved Used van?

- Is no older than 6 years old
- Has less than 150,000 miles on the clock
- Is eligible for one of our flexible finance plans

[Find more information and our latest Approved Used Electric offers](#)

What is an Approved Used Electric van?

[Visit our Dealer Networks Approved Used Electric van stock](#)

The Mercedes-Benz eCitan

25



RETURN TO START

All eCitan models will include an Integrated Service Package (ISP).

Integrated Service Package (ISP), helps to form an integral part of our commitment that the eCitan is not only performing well but is safe to operate at all times.

Our ISP consists of four services: two A (minor) and two B (major) services as standard – and can be transferred to a new owner. All of our electric vehicles also come with out of charge cover and an 8year/100,000 mile battery capacity warranty as standard.



Service24: Demand more.

The most comprehensive Aftercare package – for businesses that demand more.

Our 120-strong Dealer network works around the clock to service and maintain your vans and keep your business moving. It all adds up to more value, more flexibility and more confidence that you'll only find at an authorised Mercedes-Benz Dealer.



Flexible servicing and maintenance

Book your service online or by telephone, and as well as a standard 'drop and go' service with a courtesy van, you'll also get:

- Early bird, late night and weekend slots
- Mobile service
- Overnight service
- Collect & deliver service
- Express 1hr service
- Electric van service.

[Find out more about service and repairs](#)

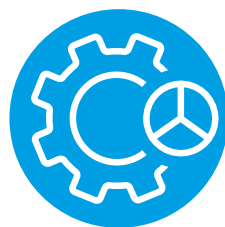


Flexible ways to pay and save

With fixed, transparent national pricing there are no surprises with our services and repairs – plus you can fix, spread and reduce your service and maintenance costs, and ease your cashflow at the same time, with a payment plan.

- Pay as You Go
- ServiceCare Maintenance
- ServiceCare Complete.

[Find out more about service options](#)



3-year unlimited mileage warranty

Available on every new van, all service and maintenance – and any work required – is covered by your 3-year unlimited mileage warranty, and is only undertaken by Mercedes-Benz trained technicians using Mercedes-Benz GenuineParts.

8 year/100,000 mile Battery Capacity Warranty

For peace of mind and reliable performance, the eCitan's battery comes with an impressive 8 year/100,000 mile battery guarantee.

[Find out more about warranties](#)



Free breakdown cover & roadside assistance*

Every van comes with free Europe-wide breakdown cover – MobiloVan. And with 3 years' cover on new vehicles for driver mishaps, no one goes further to keep your business moving.

- Trained technicians using only Mercedes-Benz GenuineParts
- Out of charge cover for electric vehicles
- Forward travel of load and crew is covered
- Driver mishap cover for the first 3 years, including out of charge cover or empty fuel tanks.

[Find out more about MobiloVan](#)

*For a full list of exclusions and all product terms please visit www.mercedes-benz.co.uk/vans/en/Owners/MobiloVan

The Mercedes-Benz eCitan

27

