



The Mercedes-Benz Sprinter.

Chassis Cab and Chassis Crewcab models.

Prices effective from January 2022.

Mercedes-Benz



[RETURN TO START](#)

Contents

> Model overview	3
> Models	
Sprinter Chassis Cab	4
Sprinter Chassis Crewcab	5
> Colours and Upholstery	6
> MBUX infotainment system	7
> Equipment	8
> Engine and gearbox	20
> Fuel consumption	21
> Weights and payloads	23
> Dimensions	24
> List prices	28
> Approved Used	29
> Finance Options	30
> Aftercare	31

Please note

This document provides information about the model range line-up and specifications of the Sprinter. It also contains key details about options, economy and performance of all variants. Details are correct at time of publication and are subject to revision. Any images used in this document may not reflect UK specification and are for illustrative purposes only. Images may show optional equipment which does not form part of UK standard specification.

[RETURN TO START](#)

The Mercedes-Benz Sprinter Chassis Cab and Chassis Crewcab.

2 van models:



Chassis Cab – 3 seats



Chassis Crewcab – 6 seats

Available in 2 emission categories:

Euro 6d (Light duty)

Euro VI (Heavy duty)

2 lengths:



L2



L3 Chassis Crewcab only

1 trim:



PROGRESSIVE

Discover more about the other Mercedes-Benz Sprinter diesel models in our range:

- [The Sprinter Panel Van](#)
- [The Sprinter Crew Van](#)
- [Sprinter Ready to work conversions](#)

Discover more about the Mercedes-Benz Sprinter electric models in our range:

- [The eSprinter Panel Van](#)

The Sprinter Chassis Cab.

The Progressive trimline offers the following features:

Interior

- Height & rake adjustable steering wheel
- Comfort overhead control panel
- Driver's armrest
- Dual passenger seat
- Eco Start/Stop

Exterior

- Headlight assistant
- Heat-insulating glass

Safety, security and connectivity

- Active Brake ASSIST
- ADAPTIVE ESP*
- Additional USB-C
- ATTENTION ASSIST
- Crosswind ASSIST
- Cruise control/Speed limiter
- Double locks
- Integrated connected Thatcham approved alarm system
- Keyless start
- MBUX multimedia system with 7-inch touch screen
- USB-C and Bluetooth® interface, WiFi hotspot, Apple CarPlay/Android Auto and a DAB radio

From £36,630*

* Based on a Sprinter 315 Chassis L2 FWD - Euro 6d

- **2 lengths available**
L2: 5,986mm (FWD) or 5,886mm (RWD)
L3: 6,695mm (RWD)
- **FWD and RWD options available**

➤ [Arrange a test drive at your nearest Dealership](#)



The Mercedes-Benz Sprinter

Sprinter Chassis Cab	Sprinter Chassis Crewcab	MBUX	Equipment	Engine and gearbox	Fuel consumption	Weights and payloads	Dimensions	List prices	Approved Used	Finance Options	Aftercare
----------------------	--------------------------	------	-----------	--------------------	------------------	----------------------	------------	-------------	---------------	-----------------	-----------

The Sprinter Chassis Crewcab.

The Progressive trimline offers the following features:

Interior

- Height & rake adjustable steering wheel
- Comfort overhead control panel
- Driver's armrest
- Dual passenger seat
- Eco Start/Stop

Exterior

- Headlight assistant
- Heat-insulating glass

Safety, security and connectivity

- Active Brake ASSIST
- ADAPTIVE ESP®
- Additional USB-C
- ATTENTION ASSIST
- Crosswind ASSIST
- Cruise control/Speed limiter
- Double locks
- Integrated connected Thatcham approved alarm system
- Keyless start
- MBUX multimedia system with 7-inch touch screen
- USB-C and Bluetooth® interface, WiFi hotspot, Apple CarPlay/Android Auto and a DAB radio

Additional features included with the Crewcab:

- Additional passenger doors
- Passenger seat compartment – 3-seater bench
- Panelling under the roof

From £40,490*

* Based on a Sprinter 315 Crewcab L3 RWD – Euro VI

- **1 length available**
L3: 6,695mm

- **RWD only**

➤ **Arrange a test drive at your nearest Dealership**



Image shows upgraded Black ARNCO man-made leather

The Mercedes-Benz Sprinter

Sprinter Chassis Cab	Sprinter Chassis Crewcab	MBUX	Equipment	Engine and gearbox	Fuel consumption	Weights and payloads	Dimensions	List prices	Approved Used	Finance Options	Aftercare
----------------------	--------------------------	------	-----------	--------------------	------------------	----------------------	------------	-------------	---------------	-----------------	-----------

Colours and upholstery.

Solid paints



Arctic White (Standard)



Jupiter Red



Steel Blue



Blue Grey



Jet Black

Metallic paints



Cavansite Blue Metallic



Tenorite Grey Metallic



Selenite Grey Metallic



Obsidian Black Metallic

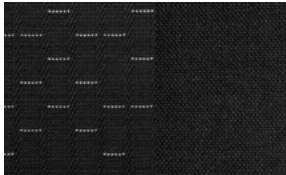


Iridium Silver Metallic

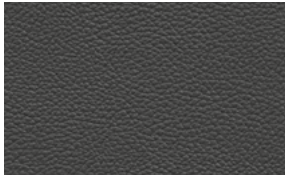
Interior upholstery



Maturin black fabric (Standard)



Caluma black fabric



Black ARTICO man-made leather

- For paint pricing, see page 8
- For upholstery pricing, see page 12

MBUX – the Mercedes-Benz User Experience infotainment system.



RETURN TO START

The state-of-the-art MBUX technology comes with a high resolution 7-inch touchscreen fitted as standard, offering intuitive touch control. You can also upgrade to a 10.25-inch display with HD resolution for additional features.

7-inch (standard) features

The state-of-the-art MBUX technology comes as standard in every Sprinter and offers a wealth of features:

- Works in conjunction with steering wheel touch pads, for quick and easy fingertip access
- Apple CarPlay/Android Auto, a DAB radio and Wi-Fi hotspot*
- Allows text messages and navigation data to be sent between the driver and vehicle manager when the van is stationary to increase productivity and efficiency
- Additional services such as Live Traffic information can be accessed via Mercedes me. More information about Mercedes me is [available here](#).

10.25-inch (optional upgrade) additional features

- 'Hey Mercedes', Voice Command Operation
- What3words – a geocoded map system offering more accurate location services – integrated into the in-van navigation systems. Drivers with compatible models can now say or type in a three-word address to get directions to a precise 3m x 3m location, anywhere in the world.

➤ [For more information on optional features, see page 15](#)

7-inch (standard)



10.25-inch (optional upgrade)



Equipment (standard and optional overview).


[RETURN TO START](#)

Every Sprinter model comes with a host of standard features, plus a range of optional equipment you can add to enhance your van.

Key: ● Standard ○ Optional — Not available

			Front-wheel drive	Rear-wheel drive		
Equipment	Description	Option code	PROGRESSIVE	PROGRESSIVE	Basic Price excl. VAT	Basic Price incl. VAT
Exterior Features						
Axle	Front axle with increased load capacity	A50	●	○	£270.00	£324.00
	Rear axle springs made of glass-fibre-reinforced plastic	C83	○	○	£245.00	£294.00
Exhaust	Exhaust straight to chassis rear	K60	○	○	£120.00	£144.00
Fuel Tank	50L Fuel tank Note: FWD only.	K11	○	—	£0.00	£0.00
	65L Fuel tank Note: FWD only.	K12	●	—	£0.00	£0.00
	71L Fuel tank Note: RWD only.	K13	—	●	£0.00	£0.00
	92L Fuel tank Note: FWD only.	KB8	○	—	£275.00	£330.00
	93L Fuel tank	KB7	—	○	£280.00	£336.00
	Diesel filler cap in red	K56	○	○	£20.00	£24.00
	Fuel filter with water separator	KL5	●	●	£0.00	£0.00
	Lockable AdBlue filler cap	K53	○	○	£20.00	£24.00
Mud flaps	Front mud flaps	P47	○	○	£55.00	£66.00
	Rear mud flaps	P48	○	○	£55.00	£66.00
Paint	Chrome-plated radiator grille Includes: Radiator grille frame in vehicle colour (CN2).	FK3	○	○	£215.00	£258.00
	Optional colours, solid or metallic finish.	—	○	○	£685.00	£822.00
	Radiator grille frame in vehicle colour	CM2	○	○	£95.00	£114.00
Power Take Off	Constant engine speed control Includes: Parameterizable special module (ED5).	M53	○	○	£205.00	£246.00
	Variable electronic engine speed control Includes: Parameterizable special module (ED5).	MT4	○	○	£545.00	£654.00
	Engine front power take-off with bracket for additional alternator	N62	—	○	£295.00	£354.00
	Engine power take-off at front with carrier for additional refrigerant compressor	N63	—	○	£295.00	£354.00

Changes to individual option availability and combinations may occur depending on vehicle specification choices and the continuing evolution and adaptation of our product range. These changes may not be immediately reflected in this document as they occur, but will be introduced at the next revision opportunity.

The Mercedes-Benz Sprinter

8

Equipment (standard and optional overview).


[RETURN TO START](#)

Equipment	Description	Option code	Front-wheel drive	Rear-wheel drive	Basic Price excl. VAT	Basic Price incl. VAT
Exterior Features (cont.)						
Power Take Off (cont.)	Power take off counter shaft MB, (2c)	N05	—	○	£940.00	£1,128.00
	Power take off counter shaft MB, (2b)	N07	—	○	£1,065.00	£1,278.00
Suspension	Suspension packages are available on select models, depending on application and variant. Please consult your local Dealer.					
	Air suspension – run-on module 1 h Note: Only available in conjunction with comfort suspension air suspension (CB2).	C1N	—	○	£170.00	£204.00
	Air suspension for rescue vehicles Note: Only available in conjunction with comfort suspension air suspension (CB2).	C1R	—	○	£95.00	£114.00
	Air suspension – pre-installation for control switch in rear Note: Only available in conjunction with comfort suspension air suspension (CB2).	C1V	—	○	£75.00	£90.00
	Air suspension – actuation, speed signal Note: Only available in conjunction with comfort suspension air suspension (CB2).	C2A	—	○	£95.00	£114.00
	Air suspension – control switch in instrument panel Note: Only available in conjunction with comfort suspension air suspension (CB2).	C2I	—	○	£125.00	£150.00
	Air suspension – valve for emergency filling Note: Only available in conjunction with comfort suspension air suspension (CB2).	C2V	—	○	£120.00	£144.00
	Comfort air suspension	CB2	—	○	£2,350.00	£2,820.00
	Deletion, vehicle lowering Note: Only available for vehicles in the weight classes 3,000 kg and 3,500 kg with rear-wheel drive.	CW2	○	○	£0.00	£0.00
	Longitudinal member reinforcement	Q11	●	●	£0.00	£0.00
	Reinforced shock absorbers	C47	○	○	£110.00	£132.00
	Stabilisation level I Note: Not available for weight class 4,100 kg with front-wheel drive. Replaces CF2 to CF3 from previous Sprinter.	CB7	●	●	£0.00	£0.00
	Stabilisation level II Note: replaces CF4 and CF5 from previous Sprinter.	CB8	○	○	£710.00	£852.00
	Suspension for comfort and cargo protection	CB1	○	○	£330.00	£396.00
	Vibration damper	CT1	—	○	£90.00	£108.00
Tyres	Summer tyres	RM7	●	●	£0.00	£0.00
	All-season tyres	RM0	○	○	£105.00	£126.00
	Mud and slush tyres	RM1	○	○	£200.00	£240.00

● Standard ○ Optional — Not available

The Mercedes-Benz Sprinter

9

Sprinter Chassis
Cab

Sprinter Chassis
Crewcab

MBUX

Equipment

Engine and
gearbox

Fuel consumption

Weights and
payloads

Dimensions

List prices

Approved Used

Finance Options

Aftercare

Equipment (standard and optional overview).


[RETURN TO START](#)

Equipment	Description	Option code	Front-wheel drive	Rear-wheel drive		
			PROGRESSIVE	PROGRESSIVE	Basic Price excl. VAT	Basic Price incl. VAT
Exterior Features (cont.)						
Tyres (cont.)	Tyres without name of make	RD9	●	●	£0.00	£0.00
	Resistance-optimised tyres	RR0	●	●	£0.00	£0.00
	Continental tyres	RF1	○	○	£0.00	£0.00
	Goodyear (90) tyres	RF9	○	○	£0.00	£0.00
	Michelin (80) tyres	RF8	○	○	£0.00	£0.00
	Pirelli (50) tyres	RF5	○	○	£0.00	£0.00
	Tyres 225/65 R16 C	RN5	●	○	£0.00	£0.00
	Tyres 225/75 R16 C	RG8	—	—	£0.00	£0.00
	Tyres 235/65 R16 C	RH2	—	●	£0.00	£0.00
	Tyres 235/60 R17 C	RH3	—	○	£0.00	£0.00
	Tyre pressure monitoring systems	RY2	○	○	£250.00	£300.00
	Steel wheels in arctic white	RM2	○	○	£60.00	£72.00
	Steel wheels 6.5 J x 16	RS3	●	●	£0.00	£0.00
Wheels	Light-alloy wheels 6.5 J x 16	RL5	○	○	£670.00	£804.00
	Light-alloy wheels, 6.5 J x 16 in black	RM3	○	—	£780.00	£936.00
	Light-alloy wheels 6.5 J x 17 Includes: Tyres 235/60 R17 C (RH3).	RL7	—	○	£735.00	£882.00
	Full wheel cover	RD8	○	○	£100.00	£120.00
	Spare wheel	R87	●	●	£0.00	£0.00
	Omission of spare wheel	R020	○	—	-£55.00	-£66.00
	Spare wheel bracket below frame end	R65	●	●	£0.00	£0.00
	Jack	Y36	●	—	£0.00	£0.00
	Hydraulic Jack	Y43	—	●	£0.00	£0.00

● Standard ○ Optional — Not available

The Mercedes-Benz Sprinter

10

Equipment (standard and optional overview).


[RETURN TO START](#)

Equipment	Description	Option code	Front-wheel drive	Rear-wheel drive	Basic Price excl. VAT	Basic Price incl. VAT
			PROGRESSIVE	PROGRESSIVE		
Interior Features						
Gearbox	6-speed manual transmission	GE9	●	—	£0.00	£0.00
	ECO Gear 360 6-speed manual transmission	GD8	—	●	£0.00	£0.00
	9G-TRONIC automatic gearbox	G43	—	○	£2,030.00	£2,436.00
	9G-TRONIC automatic gearbox (FWD)	GK8	○	—	£1,990.00	£2,388.00
Grab handles	Grab handles for driver's and co-driver's doors	T75	○	○	£65.00	£78.00
	Grab handle for inner seat, two-seater	S78	○	○	£45.00	£54.00
Heating	Heat insulation	H04	○	○	£105.00	£126.00
	Electric hot-air auxiliary heater	HH2	○	○	£185.00	£222.00
	Heater booster system	HZ9	○	○	£500.00	£600.00
	Hot-water auxiliary heater	H12	○	○	£645.00	£774.00
	Pre-installation for additional heat exchanger Includes: Sliding door (T93) and Hot-water auxiliary heater (H12).	H88	○	○	£825.00	£990.00
	Radio remote control for hot-water auxiliary heater Includes: Hot-water auxiliary heater (H12).	HY1	○	○	£895.00	£1,074.00
	THERMOTRONIC automatic climate control system Includes: Rain sensor (JF1).	HH4	○	○	£2,170.00	£2,604.00
	TEMPMATIC semi-automatic climate control system	HH9	—	○	£1,030.00	£1,236.00
	TEMPMATIC semi-automatic climate control system Includes: FWD includes Alternator 14V/230A (M48).	HH9	○	—	£1,190.00	£1,428.00
	Ventilation system with filter	H81	○	○	£75.00	£90.00
Seating	Armrest for driver's seat	S22	●	●	£50.00	£60.00
	Armrest for co-driver's seat	S25	○	○	£45.00	£54.00
	Armrest, driver's and co-driver's door	S28	○	○	£35.00	£42.00
	Adjustable co-driver's seat	S04	○	○	£0.00	£0.00
	Comfort driver's seat	SB1	○	○	£115.00	£138.00
	Comfort co-driver's seat	SB2	○	○	£115.00	£138.00
	Convenience head restraint, driver's seat	SK0	○	○	£60.00	£72.00
	Convenience head restraint, co-driver's seat	SK1	○	○	£60.00	£72.00
	Co-driver's double seat	S23	●	●	£0.00	£0.00

● Standard ○ Optional — Not available

The Mercedes-Benz Sprinter

11

Sprinter Chassis Cab	Sprinter Chassis Crewcab	MBUX	Equipment	Engine and gearbox	Fuel consumption	Weights and payloads	Dimensions	List prices	Approved Used	Finance Options	Aftercare
----------------------	--------------------------	------	-----------	--------------------	------------------	----------------------	------------	-------------	---------------	-----------------	-----------

Equipment (standard and optional overview).


[RETURN TO START](#)

Equipment	Description	Option code	Front-wheel drive	Rear-wheel drive	Basic Price excl. VAT	Basic Price incl. VAT
Interior Features (cont.)						
Seating (cont.)	Deletion of co-driver seat, seatbox and seatbelt system	S91, S99, SW1	○	○	£0.00	£0.00
	Deletion of passenger compartment seats, if crew cab	S92	—	—	-£95.00	-£114.00
	Driver's seat	S02	●	●	£0.00	£0.00
	Driver's seat plus	SB9	○	○	£25.00	£30.00
	Driver's seat electrically adjustable Includes: Lumbar support, driver's seat (SE5), Fabric Caluma black (VF4) and Heated seat for driver (H16).	SF1	○	○	£1,190.00	£1,428.00
	Co-driver's seat electrically adjustable Includes: Seat heating for co-driver (H15) and Heated driver's seat electrically adjustable (SF1).	SF2	○	○	£2,320.00	£2,784.00
	Heated seat for driver	H16	○	○	£160.00	£192.00
	Lumbar support, driver's seat Includes: Comfort driver's seat (SB1).	SE5	○	○	£65.00	£78.00
	Lumbar support, co-driver's seat Includes: Comfort co-driver's seat (SB2).	SE4	○	○	£175.00	£210.00
	Re-enforced seat base	S86	—	—	£110.00	£132.00
	Seat heating for co-driver Includes: Heated seat for driver (H16).	H15	○	○	£320.00	£384.00
	Seat belts orange, driver and co-driver	S62	○	○	£35.00	£42.00
	Suspension seat, comfort version, driver's seat Note: Only available in conjunction with Driver's seat frame, low (S87).	SB3	○	○	£395.00	£474.00
	Suspension seat, comfort version, co-driver's seat Note: Only available in conjunction with Driver's seat frame, low (S87).	SB4	○	○	£395.00	£474.00
Trim	Seat trim upholstery – ARTICO man-made leather, black	VF6	○	○	From £55.00 depending on variant	
	Seat trim upholstery – Maturin black fabric	VF7	●	●	£0.00	£0.00
	Seat trim upholstery – Caluma black fabric	VF4	○	○	From £55.00 depending on variant	
	Rear cab wall lining	V07	○	○	£135.00	£162.00

● Standard ○ Optional — Not available

The Mercedes-Benz Sprinter

12

Equipment (standard and optional overview).


[RETURN TO START](#)

Equipment	Description	Option code	Front-wheel drive	Rear-wheel drive	Basic Price excl. VAT	Basic Price incl. VAT
Interior Features (cont.)						
Steering wheel	Leather steering wheel and leather gearshift lever	CL2	○	○	£205.00	£246.00
	Leather steering wheel Note: For automatics only. Includes: 9G-TRONIC PLUS (G43) and HOLD function (BH1).	CL3	○	○	£2,190.00	£2,628.00
	Multifunction steering wheel	C6L	●	●	£0.00	£0.00
	Steering wheel adjustable for height and tilt	CL1	●	●	£0.00	£0.00
Storage	Cup holders front – x4	FG8	○	○	£0.00	£0.00
	Hinged lid for centre stowage compartment	FJ1	●	●	£0.00	£0.00
	Hinged lid for stowage compartments left and right	FJ5	○	○	£100.00	£120.00
	Multifunction box on two-seater, stowable. Only in conjunction with: Co-driver's double seat (S23).	Y2A	○	○	£95.00	£114.00
	Omission of shelf above windscreen	FW6	—	○	£0.00	£0.00
	Omission of stowage compartment under cockpit	F3W	—	○	£0.00	£0.00
	Pre-installation for switch panel	E3J	●	●	£0.00	£0.00
	Shelf above windscreen	FF5	●	●	£0.00	£0.00
	Single-size slot at front under roof liner	FF8	○	○	£65.00	£78.00
	Stowage compartment underneath cockpit	FJ4	●	●	£0.00	£0.00
	Stowage net on driver's seat backrest	SZ7	○	○	£45.00	£54.00
	Stowage net on co-driver's seat backrest	SZ8	○	○	£45.00	£54.00
	Lockable unit in stowage compartment over windscreen	FQ6	○	○	£50.00	£60.00
Technology Software and Electrics						
Alternators	Alternator 14 V / 175 A	=	●	—	£0.00	£0.00
	Alternator 14 V / 200 A	M40	-	●	£0.00	£0.00
	Alternator 14 V / 230 A	M48	○	—	£475.00	£570.00
	Alternator 14 V / 250 A	M60	—	○	£475.00	£570.00
	Alternator 14 V / 280 A	M61	—	○	£775.00	£930.00
Audio Entertainment	Navigation Includes: 3 years of free map updates (EX9), Digital Owner's Manual (XO5) and Live Traffic capability (E1G).	E1E	○	○	£710.00	£852.00
	Communication module (LTE) for digital services Transfers data particularly rapidly and reliably with its permanently installed SIM card, creating the technical conditions for using the Mercedes me connect services.	JH3	●	●	£0.00	£0.00

● Standard ○ Optional — Not available

The Mercedes-Benz Sprinter

13

Sprinter Chassis Cab	Sprinter Chassis Crewcab	MBUX	Equipment	Engine and gearbox	Fuel consumption	Weights and payloads	Dimensions	List prices	Approved Used	Finance Options	Aftercare
----------------------	--------------------------	------	-----------	--------------------	------------------	----------------------	------------	-------------	---------------	-----------------	-----------

Equipment (standard and optional overview).


[RETURN TO START](#)

Equipment	Description	Option code	Front-wheel drive	Rear-wheel drive	Basic Price excl. VAT	Basic Price incl. VAT
Technology Software and Electrics (cont.)						
Audio Entertainment (cont.)	Digital Radio (DAB)	E1D	●	●	£0.00	£0.00
	MBUX multimedia system with 7-inch touch screen The MBUX multimedia system with 17.8 cm (7-inch) touchscreen boasts intuitive touchscreen operation, a high-resolution touchscreen and a wealth of communication and infotainment features.	E3M	●	●	£0.00	£0.00
	MBUX multimedia system with 10.25-inch touch screen Features of the MBUX multimedia system with high-resolution 26 cm (10.25-inch) touchscreen include fast hard-disc navigation with 3-D map display and smartphone integration.	E4M	○	○	£1,865.00	£2,238.00
Battery	AGM battery, 12 V 70 Ah	ED1	○	○	£0.00	£0.00
	Auxiliary battery retrofit consumers vehicle interior Includes: Cut-off relay for auxiliary battery (E36).	E2I	○	○	£340.00	£408.00
	Battery master switch, single-pin	E30	○	○	£110.00	£132.00
	Cut-off relay for auxiliary battery	E36	○	○	£100.00	£120.00
	Engine run-on system (Note exemption may be required).	MW1	○	○	£835.00	£1,002.00
	Heavy-duty battery (12v 92 aH)	ED4	●	●	£0.00	£0.00
	Jump start contact	ES0	●	●	£0.00	£0.00
Electronics	Charging package, dashboard (Two 5v USB-C sockets and 12v socket)	ES5	○	○	£65.00	£78.00
	Extension of Programmable System Module (PSM) standard contact (Additional connection options for body manufacturers).	E5M	○	○	£60.00	£72.00
	Parameterizable special module	ED5	○	○	£295.00	£354.00
	Plug socket in cab	E46	○	○	£45.00	£54.00
	Pre-wiring for parameterizable special module (PSM)	ED8	●	●	£0.00	£0.00
	Terminal strip for electrical connection	EK1	●	●	£0.00	£0.00
	Tray for smartphones Includes: Wireless charging.	E1B	○	○	£1,175.00	£1,410.00
	USB-C socket, 5 V	E1U	●	●	£0.00	£0.00
Keys	2 additional master keys	FZ9	○	○	£115.00	£138.00
	Multi-button key	FY7	○	○	£30.00	£36.00

● Standard ○ Optional — Not available

The Mercedes-Benz Sprinter

14

Equipment (standard and optional overview).


[RETURN TO START](#)

Equipment	Description	Option code	Front-wheel drive	Rear-wheel drive	Basic Price excl. VAT	Basic Price incl. VAT
Technology Software and Electrics (cont.)						
Tachograph	EU Intelligent Tachograph Std over 3.5T Note: Standard on 5 series Sprinter Chassis	JD6	○	○	£755.00	£906.00
	Omission tachograph Includes: Linear speed limiter 90 km/h EG (MD4), Qualification N2 (Z2N), Weight variant 3,550 kg (XG4) and Lane Keeping ASSIST (JW5).	J92	○	○	£0.00	£0.00
	Tachograph control under dashboard, co-driver side	J2B	○	○	£0.00	£0.00
Driver's Assistance and Safety Equipment						
Airbags	Airbag driver seat	SA5	●	●	£0.00	£0.00
	Airbag co-drivers seat Includes: Seatbelt reminder for co-drivers seat.	SA6	○	○	£330.00	£396.00
	Thorax/pelvis/side airbag for driver Includes: Front airbag co-driver (SA6) and Seat belt reminder (J55).	SH1	○	○	£680.00	£816.00
	Thorax/pelvis/side airbag for co-driver Includes: Thorax/pelvis/side airbag for driver (SH1), Front airbag co-driver (SA6) and Seat belt reminder (J55).	SH2	○	○	£920.00	£1,104.00
	Window airbags for driver and co-driver	SH9	○	○	£590.00	£708.00
Brake	Active Brake ASSIST Active Brake ASSIST can help to prevent accidents with vehicles ahead and crossing pedestrians or to mitigate their consequences.	BA3	●	●	£0.00	£0.00
	Adaptive brake light	LE1	●	●	£0.00	£0.00
	Electrical parking brake	B25	○	○	£280.00	£336.00
	Folding handbrake lever	BE2	○	○	£55.00	£66.00
	Hill-Start ASSIST Hill-Start ASSIST works by sensing the van is on an incline and holding the brakes for a few seconds – even after the handbrake has been released – until the clutch's biting point has been found and the van begins to move forwards.	E07	●	●	£0.00	£0.00
	HOLD function (Braking assistance on downhill stretches and at a traffic light stop). Only in conjunction with: G42 or GK8.	BH1	○	○	£0.00	£0.00
	Wheel chock Note: Standard on over 3.5t	Y26	○	○	£45.00	£54.00

● Standard ○ Optional — Not available

The Mercedes-Benz Sprinter

15

Sprinter Chassis
Cab

Sprinter Chassis
Crewcab

MBUX

Equipment

Engine and
gearbox

Fuel consumption

Weights and
payloads

Dimensions

List prices

Approved Used

Finance Options

Aftercare

Equipment (standard and optional overview).


[RETURN TO START](#)

Equipment	Description	Option code	Front-wheel drive PROGRESSIVE	Rear-wheel drive PROGRESSIVE	Basic Price excl. VAT	Basic Price incl. VAT
Driver's Assistance and Safety Equipment (cont.)						
Driver's Assistance	Active Distance ASSIST DISTRONIC Includes: Leather steering wheel (CL3), Instrument cluster with colour display (JK5), 9G-TRONIC PLUS (G43) and HOLD function (BH1).	ET4	○	○	£3,155.00	£3,786.00
	Active Lane Keeping ASSIST Active Lane Keeping ASSIST can help to detect when the vehicle is unintentionally departing its lane, warn the driver and, if necessary, actively help to return the vehicle to its lane by means of braking interventions.	JB4	○	○	£420.00	£504.00
	ATTENTION ASSIST The ATTENTION ASSIST drowsiness detection system can recognise early signs of fatigue on long routes and night-time drives, and prompt the driver to take a break from driving.	JW8	●	●	£0.00	£0.00
	Comfort overhead control panel LED interior lighting including cab downlighting and co-/driver reading lamps; also includes a convenient spectacles compartment.	LC4	●	●	£0.00	£0.00
	Crosswind ASSIST Crosswind ASSIST detects track offset caused by strong crosswind gusts in due time and helps the driver to stay in lane.	JA8	●	●	£0.00	£0.00
	Cruise control Includes speed limiter function. Operated via a lever ergonomically positioned on the left of the steering column.	MS1	●	●	£0.00	£0.00
	Fire extinguisher	Y16	○	○	£110.00	£132.00
	First aid kit	Y10	○	○	£0.00	£0.00
	Lane Keeping ASSIST Lane Keeping ASSIST can help prevent accidents caused by unintentional lane departures with visual, audible and tactile signals.	JW5	○	○	£350.00	£420.00
	Provision electrics for reversing aid	FR7	○	○	£100.00	£20.00
	Rain sensor The rain sensor automatically regulates the wiping frequency of the windscreen wipers with activated intermittent wiping, which makes things easier for the driver.	JF1	○	○	£110.00	£132.00
	Reversing warning device includes Switch-off (JW3)	JW0	○	○	£215.00	£258.00
	Traffic Sign ASSIST Includes: 3 years of free map updates (EX9), Digital Owner's Manual (XO5), Instrument cluster with colour display (JK5), Navigation (E1E) and Live Traffic capability (E1G).	JA9	○	○	£1,140.00	£1,368.00
	Warning triangle	Y44	○	○	£0.00	£0.00

● Standard ○ Optional — Not available

The Mercedes-Benz Sprinter

16

Sprinter Chassis Cab	Sprinter Chassis Crewcab	MBUX	Equipment	Engine and gearbox	Fuel consumption	Weights and payloads	Dimensions	List prices	Approved Used	Finance Options	Aftercare
----------------------	--------------------------	------	-----------	--------------------	------------------	----------------------	------------	-------------	---------------	-----------------	-----------

Equipment (standard and optional overview).


[RETURN TO START](#)

Equipment	Description	Option code	Front-wheel drive	Rear-wheel drive	Basic Price excl. VAT	Basic Price incl. VAT
Driver's Assistance and Safety Equipment (cont.)						
Driver's Assistance (cont.)	WET WIPER system. The WET WIPER SYSTEM windscreen wiper system offers the driver an improved view already during the wiping process. Includes: Rain sensor (JF1).	FM3	○	○	£110.00	£132.00
Road speed limiters	Linear speed limiter 90 km/h	MD5	○	○	£70.00	£84.00
	Linear speed limiter 100 km/h	MD3	○	○	£70.00	£84.00
	Linear speed limiter 120 km/h	MD4	○	○	£70.00	£84.00
	Speed limiter, 110 km/h	MK0	○	○	£135.00	£162.00
	Speed limiter, 130 km/h	MK2	○	○	£135.00	£162.00
Safety	Breakdown management	EY6	●	●	£0.00	£0.00
	Clearance light on roof	LB8	○	○	£300.00	£360.00
	ECO start/stop function Note: Not available in conjunction with AWD or 314 RWD Chassis Includes: Alternator 14 V/200 A (M40) on RWD.	MJ8	●	●	£270.00	£324.00
	Deactivation of bulb failure indicator	JW2	○	○	£0.00	£0.00
	Live Traffic capability Note: Only available in conjunction with navigation.	E1G	○	○	£0.00	£0.00
	Incorrect fuelling protection system	K51	○	○	£50.00	£60.00
	Mercedes-Benz emergency call system	EY5	●	●	£0.00	£0.00
	Outside temperature indicator	J65	●	●	£0.00	£0.00
	Seat belt reminder for co-driver seat	J55	○	○	£100.00	£120.00
	Seat belt warning for driver's seat	J58	●	●	£0.00	£0.00
Security	Anti-theft Alarm Alarm protection for vehicle and cargo.	FY1	●	●	£0.00	£0.00
	Double locks	FY2	●	●	£0.00	£0.00
	VIN visible from outside	XC8	●	●	£0.00	£0.00
Lighting						
Lighting	Courtesy lights The exit lights at the front doors and sliding doors improve comfort and safety when getting in and out – both for driver and co-driver as well as for the passengers in the passenger compartment.	LB9	○	○	£70.00	£84.00
	Direction indicators on the front wings Includes: Exterior mirrors without indicators (FU5).	L44	○	○	£100.00	£120.00

● Standard ○ Optional — Not available

The Mercedes-Benz Sprinter

17

Sprinter Chassis Cab	Sprinter Chassis Crewcab	MBUX	Equipment	Engine and gearbox	Fuel consumption	Weights and payloads	Dimensions	List prices	Approved Used	Finance Options	Aftercare
----------------------	--------------------------	------	-----------	--------------------	------------------	----------------------	------------	-------------	---------------	-----------------	-----------

Equipment (standard and optional overview).


[RETURN TO START](#)

Equipment	Description	Option code	Front-wheel drive	Rear-wheel drive	Basic Price excl. VAT	Basic Price incl. VAT
Lighting (cont.)						
Lighting (cont.)	Fog lamps with cornering light function	L13	○	○	£205.00	£246.00
	Headlight assistant The automatic headlamps automatically switch the dipped beams on and off depending on the current light conditions, which increases the driving comfort for the driver, and the road safety.	LA2	●	●	£0.00	£0.00
	Highbeam ASSIST Highbeam ASSIST automatically switches the main beams on and off in line with the traffic situation and thereby relieves the driver of manually switching back and forth between main beams and dipped beams.	LA1	○	○	£275.00	£330.00
	LED high performance headlamps Includes: Tail lamps with partial LED technology (L22).	LG7	○	○	£1,515.00	£1,818.00
	Lights for left hand traffic	L10	●	●	£0.00	£0.00
	Preparation for side marker lights	LB2	—	—	£0.00	£0.00
	Omission parking lamp	L94	○	○	£0.00	£0.00
	Side marker lights Note: Standard on L2 upwards.	LB1	—	●	£0.00	£0.00
Tail light wiring harness, extended	L76	—	—	£75.00	£90.00	
Loading and Towing						
Gross Vehicle Weight (GVW)	Weight variant 3,550 kg XG4 is available as a uprated payload variant for vehicles of the weight class 3,500 kg with front or rear-wheel drive.	XG4	○	○	£350.00	£420.00
Load Area	Omission wooden floor	V010	○	○	£0.00	£0.00
Towing Equipment	Crossmember for trailer coupling	Q10	○	○	£235.00	£282.00
	Electrical components for trailer socket	E57	○	○	£110.00	£132.00
	Pre-installation for vehicle towing capacity up to 2,800 kg Includes: Electrical components for trailer socket (E57). Axle ratio i = 4,182 (AR3).	QA5	—	○	£160.00	£192.00
	Pre-installation for vehicle towing capacity up to 3,500 kg Includes: Electrical components for trailer socket (E57). Axle ratio i = 4,727 (AR5).	QA3	—	○	£310.00	£372.00
	Removable tow ball trailer coupling	Q50	○	○	£390.00	£468.00
	Towing eye rear	Q67	○	○	£15.00	£18.00
	Trailer coupling for increased towing capacity 2.8 t/3.0 t Includes: Electrical components for trailer socket (E57). Axle ratio i = 4,182 (AR3).	QA8	—	○	£580.00	£696.00

● Standard ○ Optional — Not available

The Mercedes-Benz Sprinter

18

Equipment (standard and optional overview).


[RETURN TO START](#)

Equipment	Description	Option code	Front-wheel drive	Rear-wheel drive	Basic Price excl. VAT	Basic Price incl. VAT
Loading and Towing (cont.)						
Towing Equipment (cont.)	Trailer coupling for increased towing capacity of 3.5 t Includes: Electrical components for trailer socket (E57). Axle ratio i = 4,727 (AR5) + 9G-TRONIC PLUS (G43).	QA7	—	○	£655.00	£786.00
	Trailer coupling with fixed tow ball	Q22	○	○	£345.00	£414.00
	Trailer coupling with mouth 243 / U115	Q20	—	○	£505.00	£606.00
	Trailer socket, 13-pin	E43	○	○	£145.00	£174.00
Mirrors and Windows						
Mirrors	Electrically foldable exterior mirrors Includes: Side mirrors, heated and power-adjustable (F68).	F64	○	○	£225.00	£270.00
	Exterior mirrors without indicators Includes: Direction indicators on the side at the front (L44).	FU5	○	○	£100.00	£120.00
	Heated and power-adjustable side mirrors	F68	○	○	£175.00	£210.00
	Omission of extended mirror bracket	FA70	—	—	£0.00	£0.00
	Rear-view mirror	F61	○	○	£0.00	£0.00
Windows	Omission of window in cab rear wall	FB00	○	○	£0.00	£0.00
	Heat-insulating glass all round	H20	○	○	£135.00	£162.00
	Heat-insulating glass with filter band on windscreen	H21	●	●	£0.00	£0.00
	Windscreen, heated Includes: Air conditioning, semi-automatically controlled, TEMPMATIC (HH9).	F49	○	○	£1,370.00	£1,644.00

● Standard ○ Optional — Not available

The Mercedes-Benz Sprinter

19

Engine and gearbox.


[RETURN TO START](#)

	Euro 6d		Euro VI		
	x15	x17	x15	x17	x19
Fuel	Diesel		Diesel		
Mixture preparation/injection method	Common-rail direct injection with twin stage turbocharging		Common-rail direct injection with twin stage turbocharging		
Cylinder arrangement	4cyl 16v		4cyl 16v		
Cubic capacity	1,950cc		1,950cc		
EU exhaust emission standard	Euro 6d		Euro VI		
Output, max. at 3,800rpm	150hp	170hp	150hp	170hp	190hp
Torque, max.	max. 340 Nm at 1,500 – 2,400 rpm	max. 400 Nm at 1,700 – 2,400 rpm	max. 340 Nm at 1,500 – 2,400 rpm	max. 400 Nm at 1,700 – 2,400 rpm	max. 450 Nm at 1,400 to 2,400 rpm
Fuel tank capacity FWD	65 litres		65 litres		
Fuel tank capacity RWD	71 litres		71 litres		
Fuel tank capacity AWD	—		—	—	93 litres
AbBlue® capacity	22 litres		22 litres		
6-speed manual transmission	●	●	●	●	●
9G-TRONIC	○	○	○	○	○
FWD	●	—	●	—	—
RWD	●	●	●	●	●
AWD	—	—	—	—	●
Alternator	14 V/180 A		14 V/180 A		
Battery	Heavy-duty battery (12v 92 aH)		Heavy-duty battery (12v 92 aH)		

● Standard ○ Optional — Not available

The Mercedes-Benz Sprinter

20

Fuel consumption, performance and CO₂ emissions.


[RETURN TO START](#)

Euro 6d					
Model	WLTP Fuel Consumption (l/100km/MPG)				
	Combined	Low-Speed	Medium-Speed	High-Speed	Extra High-Speed
Chassis Cab – PROGRESSIVE					
315 Chassis L2 RWD	10.9/ 25.92	11.1/ 25.4	8.9/ 31.7	9.1/ 31	13.6/ 20.7
315 Chassis L3 RWD	9/ 31.39	9.8/ 28.8	7.4/ 38.1	7.5/ 37.6	11.2/ 5.2
315 Chassis L2 FWD	11.1/ 25.4	11.1/ 25.4	9.2/ 30.7	9.3/ 30.3	14/ 20.1
317 Chassis L2 RWD	9/ 31.39	9.5/ 29.7	7.5/ 37.6	7.5/ 37.6	11.2/ 25.2
317 Chassis L3 RWD	9/ 31.39	9.6/ 29.4	7.5/ 37.6	7.6/ 37.1	11.2/ 25.2
Chassis Crewcab – PROGRESSIVE					
315 Crewcab L3 RWD	9.3/ 30.3	10.1/ 27.9	7.7/ 36.6	7.8/ 36.2	11.4/ 24.78

Euro VI					
Model	WLTP Fuel Consumption (l/100km/MPG)				
	Combined	Low-Speed	Medium-Speed	High-Speed	Extra High-Speed
Chassis Cab – PROGRESSIVE					
315 Chassis L2 RWD	12.6/ 22.4	11.2/ 25.2	9.9/ 28.53	10.9/ 25.9	16/ 17.6
315 Chassis L3 RWD	12.6/ 22.4	11.2/ 25.2	9.9/ 28.53	10.9/ 25.9	16/ 17.6
317 Chassis L2 RWD	13.1/ 21.5	11.4/ 24.7	10.1/ 27.9	11.2/ 25.2	17/ 16.6
317 Chassis L3 RWD	13.1/ 21.5	11.4/ 24.7	10.1/ 27.9	11.2/ 25.2	17/ 16.6
515 Chassis L2 RWD	13.9/ 20.3	13.4/ 21	11.7/ 24.1	12.5/ 22.6	16.5/ 17.1
515 Chassis L3 RWD	13.9/ 20.3	13.4/ 21	11.7/ 24.1	12.5/ 22.6	16.5/ 17.1
517 Chassis L2 RWD*	TBA				
517 Chassis L3 RWD*					
519 Chassis L2 AWD*					
519 Chassis L2 RWD	15.6/ 18.1	14.4/ 19.62	12.5/ 22.6	13.5/ 20.9	19.8/ 14.2
519 Chassis L3 RWD	15.6/ 18.1	14.4/ 19.62	12.5/ 22.6	13.5/ 20.9	19.8/ 14.2
Chassis Crewcab – PROGRESSIVE					
315 Crewcab L3 RWD	12.6/ 22.4	11.2/ 25.2	9.9/ 28.53	10.9/ 25.9	16/ 17.6
515 Crewcab L3 RWD	13.9/ 20.3	13.4/ 21	11.7/ 24.1	12.5/ 22.6	16.5/ 17.1

* Model to be released 2022.

All figures are based on a standard specification. The addition of factory options may affect CO₂ emissions and corresponding Road Fund Licence. The indicated values were determined according to the prescribed measurement method – Worldwide Harmonised Light Vehicle Test Procedure (WLTP). Figures shown may include options which are not available in the UK. Figures shown are for comparability purposes; only compare with other vans tested to the same technical procedures. Figures may not reflect real life driving results, which will depend upon a number of factors including Body fitted, factory-fitted options, accessories fitted (post registration), variations in weather, driving styles and vehicle load. Further information about the test used to establish fuel consumption and CO₂ figures can be found at <https://www.Mercedes-Benz.co.uk/vans/en/WLTP>

Fuel consumption, performance and CO₂ emissions.


[RETURN TO START](#)

Euro 6d					
Model	WLTP CO ₂ emissions (g/km)				
	Combined	Low-Speed	Medium-Speed	High-Speed	Extra High-Speed
Chassis Cab – PROGRESSIVE					
315 Chassis L2 RWD	285	292	234	239	358
315 Chassis L3 RWD	237	257	195	198	294
315 Chassis L2 FWD	291	291	242	243	367
317 Chassis L2 RWD	236	249	195	197	293
317 Chassis L3 RWD	237	251	197	198	293
Chassis Crewcab – PROGRESSIVE					
315 Crewcab L3 RWD	243	265	202	204	300

Euro VI					
Model	WLTP CO ₂ emissions (g/km)				
	Combined	Low-Speed	Medium-Speed	High-Speed	Extra High-Speed
Chassis Cab – PROGRESSIVE					
315 Chassis L2 RWD	330	293	259	288	421
315 Chassis L3 RWD	330	293	259	288	421
317 Chassis L2 RWD	343	300	266	293	447
317 Chassis L3 RWD	343	300	266	293	447
515 Chassis L2 RWD	364	352	306	328	433
515 Chassis L3 RWD	364	352	306	328	433
517 Chassis L2 RWD*	TBA				
517 Chassis L3 RWD*					
519 Chassis L2 AWD*					
519 Chassis L2 RWD	410	376	328	354	518
519 Chassis L3 RWD	410	376	328	354	518
Chassis Crewcab – PROGRESSIVE					
315 Crewcab L3 RWD	330	293	259	288	421
515 Crewcab L3 RWD	364	352	306	328	433

* Model to be released 2022.

All figures are based on a standard specification. The addition of factory options may affect CO₂ emissions and corresponding Road Fund Licence. The indicated values were determined according to the prescribed measurement method – Worldwide Harmonised Light Vehicle Test Procedure (WLTP). Figures shown may include options which are not available in the UK. Figures shown are for comparability purposes; only compare with other vans tested to the same technical procedures. Figures may not reflect real life driving results, which will depend upon a number of factors including Body fitted, factory-fitted options, accessories fitted (post registration), variations in weather, driving styles and vehicle load. Further information about the test used to establish fuel consumption and CO₂ figures can be found at <https://www.Mercedes-Benz.co.uk/vans/en/WLTP>

Weights and payloads.


[RETURN TO START](#)

Euro 6d				
Model	Kerb weight (kg)	Gross Vehicle Weight (kg)	Payload (kg)	Gross Train Weight (kg)
Chassis Cab – PROGRESSIVE				
315 Chassis L2 RWD	1,860	3,500	1,640	5,500
315 Chassis L3 RWD	1,893	3,500	1,607	5,500
315 Chassis L2 FWD	1,806	3,500	1,694	5,500
317 Chassis L2 RWD	1,881	3,500	1,619	5,500
317 Chassis L3 RWD	1,914	3,500	1,586	5,500
Chassis Crewcab – PROGRESSIVE				
315 Crewcab L3 RWD	2,062	3,500	1,438	5,500

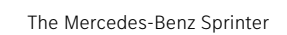
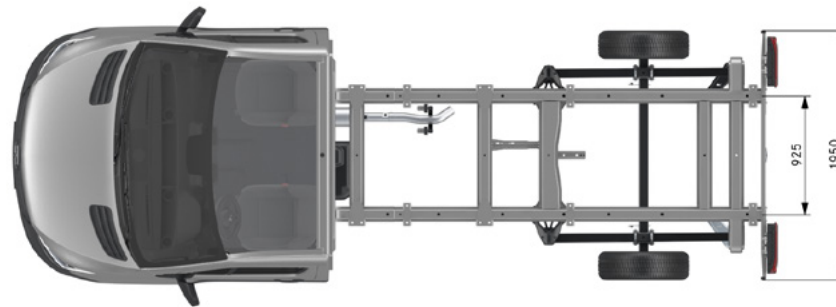
Euro VI				
Model	Kerb weight (kg)	Gross Vehicle Weight (kg)	Payload (kg)	Gross Train Weight (kg)
Chassis Cab – PROGRESSIVE				
315 Chassis L2 RWD	1,881	3,500	1,619	5,500
315 Chassis L3 RWD	1,914	3,500	1,586	5,500
317 Chassis L2 RWD	1,881	3,500	1,619	5,500
317 Chassis L3 RWD	1,914	3,500	1,586	5,500
515 Chassis L2 RWD	2,075	4,250	2,175	6,250
515 Chassis L3 RWD	2,115	4,250	2,135	6,250
517 Chassis L2 RWD*	TBA			
517 Chassis L3 RWD*				
519 Chassis L2 AWD*				
519 Chassis L2 RWD	2,088	4,250	2,162	6,250
519 Chassis L3 RWD	2,128	4,250	2,122	6,250
Chassis Crewcab – PROGRESSIVE				
315 Crewcab L3 RWD	2,083	3,500	1,417	5,500
515 Crewcab L3 RWD	2,299	4,250	1,951	6,250

* Model to be released 2022.

CHASSIS CAB FRONT-WHEEL DRIVE **L2**

Side view of the Mercedes-Benz Sprinter chassis cab. Dimensions are shown in millimeters (mm):

- Overall length: 3378 mm
- Wheelbase: 3924 mm
- Front overhang: 1012 mm
- Rear overhang: 1050 mm
- Height to roof top: 1512 mm

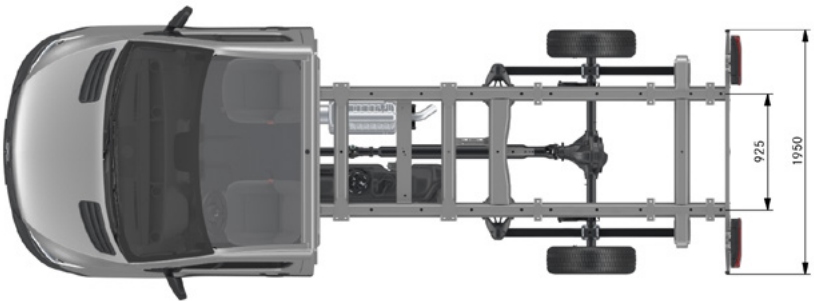
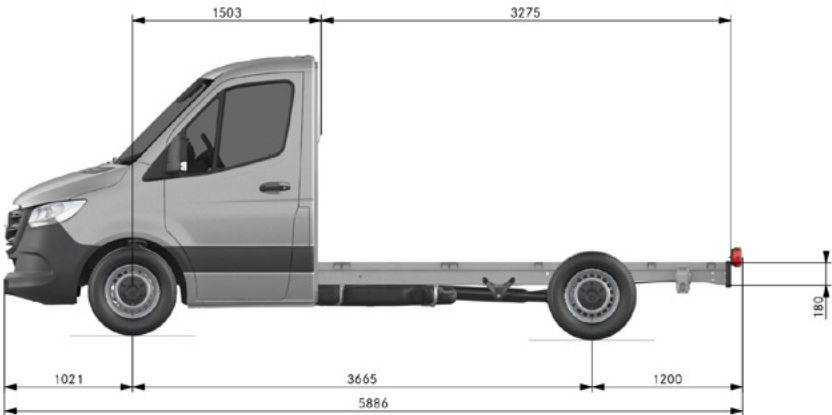


Dimensions.



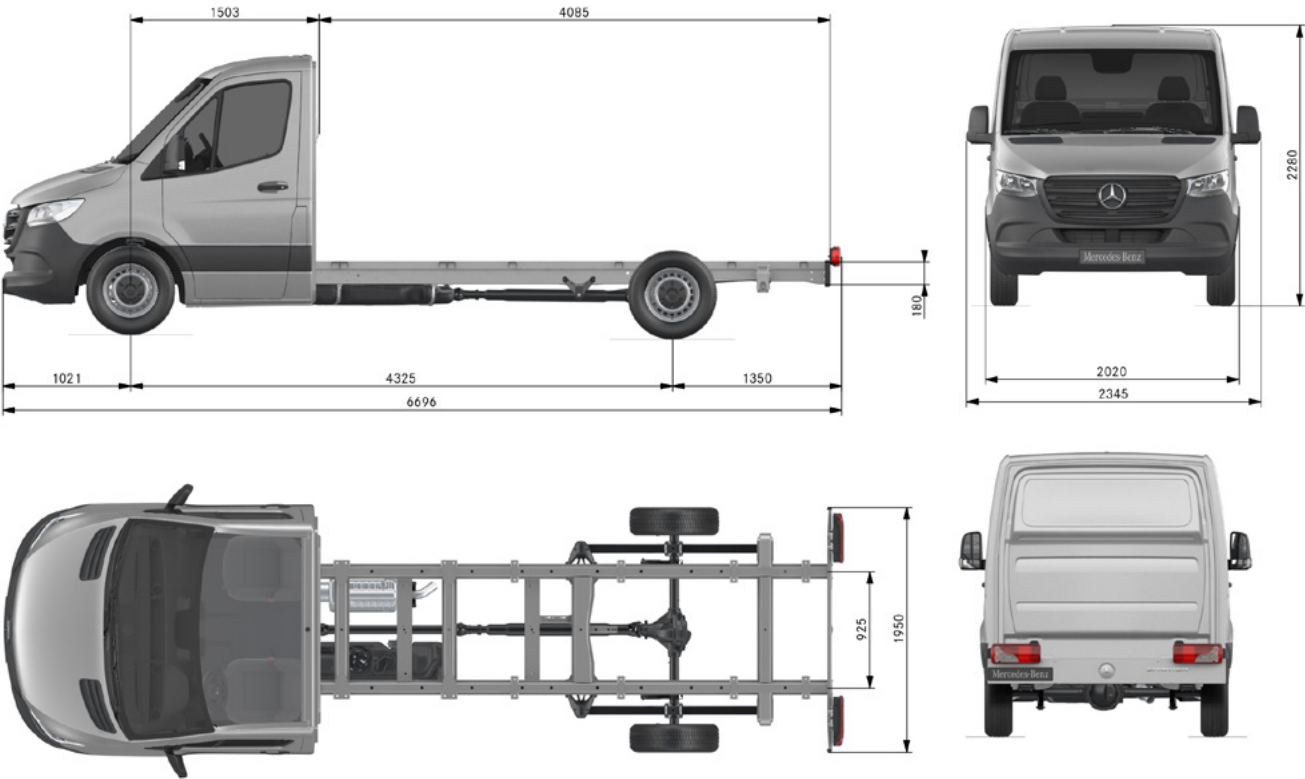
RETURN TO START

CHASSIS CAB REAR-WHEEL DRIVE L2		
Wheelbase	Wheelbase length	3,665mm
	Turning circle	13.3m
	Track circle	12.4m
	Front track width	1,726mm
	Rear track width	1,732mm
Vehicle	Length	5,886mm
	Height (unladen)	2,318mm
	Width (inc. wing mirrors)	2,345mm
	Ground clearance	188mm



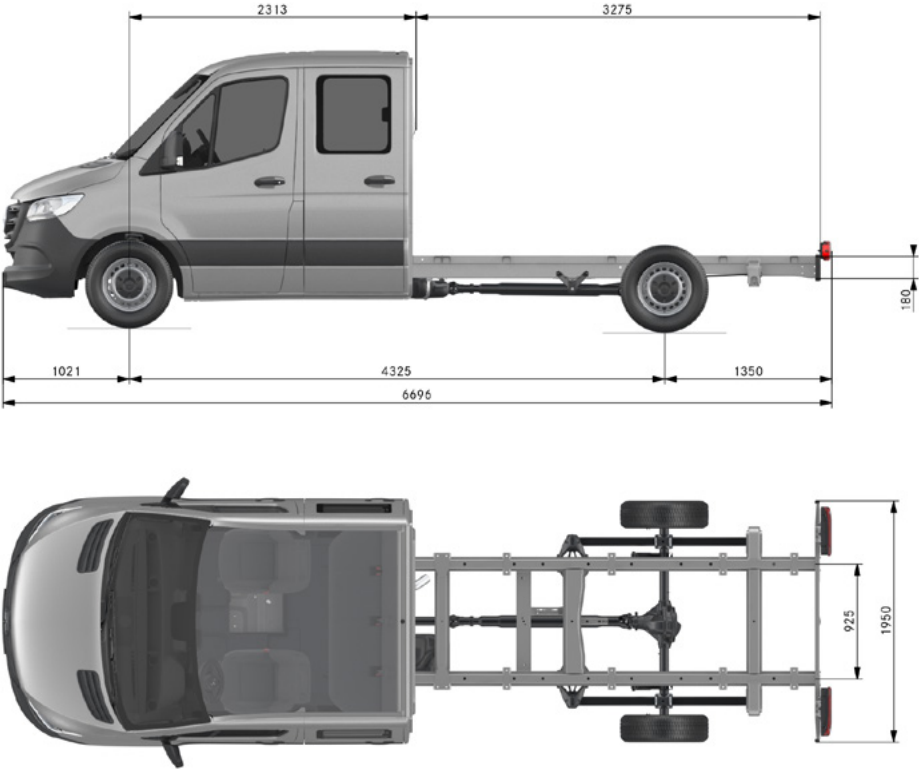
Dimensions.

CHASSIS CAB REAR-WHEEL DRIVE L3		
Wheelbase	Wheelbase length	4,325mm
	Turning circle	15.3m
	Track circle	14.4m
	Front track width	1,726mm
	Rear track width	1,732mm
Vehicle	Length	6,695mm
	Height (unladen)	2,311mm
	Width (inc. wing mirrors)	2,345mm
	Ground clearance	188mm

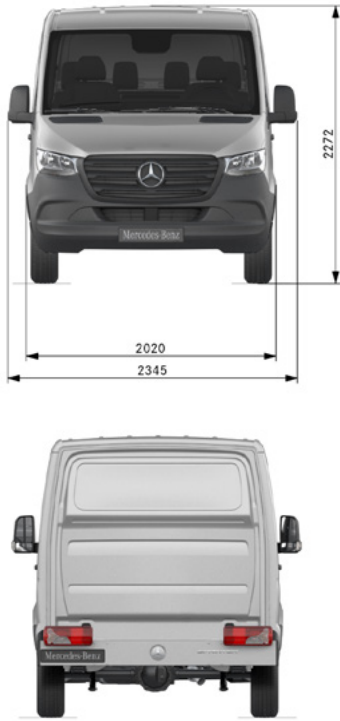


Dimensions.

CHASSIS CREWCAB REAR-WHEEL DRIVE L3		
Wheelbase	Wheelbase length	4,325mm
	Turning circle	15.3m
	Track circle	14.4m
	Front track width	1,726mm
	Rear track width	1,732mm
Vehicle	Length	6,695mm
	Height (unladen)	2,301mm
	Width (inc. wing mirrors)	2,345mm
	Ground clearance	188mm



RETURN TO START



List prices.


[RETURN TO START](#)

Euro 6d		
Model	Basic Recommended Retail Price (Ex. VAT)	Basic Recommended Retail Price (Inc. VAT)
Chassis Cab – PROGRESSIVE		
315 Chassis L2 RWD	£36,630	£43,956
315 Chassis L3 RWD	£37,445	£44,934
315 Chassis L2 FWD	£35,315	£42,378
317 Chassis L2 RWD	£37,550	£45,060
317 Chassis L3 RWD	£38,365	£46,038
Chassis Crewcab – PROGRESSIVE		
315 Crewcab L3 RWD	£40,490	£48,588

Euro VI		
Model	Basic Recommended Retail Price (Ex. VAT)	Basic Recommended Retail Price (Inc. VAT)
Chassis Cab – PROGRESSIVE		
315 Chassis L2 RWD	£36,630	£43,956
315 Chassis L3 RWD	£37,445	£44,934
317 Chassis L2 RWD	£37,550	£45,060
317 Chassis L3 RWD	£38,365	£46,038
515 Chassis L2 RWD	£44,170	£53,004
515 Chassis L3 RWD	£44,985	£53,982
517 Chassis L2 RWD*	£44,890	£53,868
517 Chassis L3 RWD*	£45,705	£54,846
519 Chassis L2 AWD*	£53,045	£63,654
519 Chassis L2 RWD	£47,845	£57,414
519 Chassis L3 RWD	£48,660	£58,392
Chassis Crewcab – PROGRESSIVE		
315 Crewcab L3 RWD	£40,490	£48,588
515 Crewcab L3 RWD	£47,830	£57,396

- › All prices based on manual transmission. Automatic transmissions available as an option – [see page 11](#)
- › For special orders please consult your local Dealer – [find your nearest Dealership](#)

* Model to be released 2022.

This document is for guidance only and must be used in conjunction with a configuration tool prior to final specification decisions and vehicle quotations being prepared and accepted. List prices are quoted ex-factory unless otherwise stated. Delivery charges excluding VAT will be added to model prices quoted in this document. Prices based on standard finish paint choice. Mercedes-Benz Vans UK and authorised Dealers reserve the right to alter specification and vary prices without notice. The availability of options may depend on the chosen base vehicle and other optional equipment specified, and should be confirmed with your Mercedes-Benz Vans Dealer prior to order placement. VAT is calculated at the standard rate of 20%. Mercedes-Benz Vans UK Ltd, Tongwell, Milton Keynes MK15 8BA.

Mercedes-Benz Approved Used vans.

Get used to more...

More choice. More confidence. More quality – and more added extras.

As a Mercedes-Benz Approved Used customer, you'll have complete peace of mind as every van offers the same commitment to quality and workmanship as new and comes with:



Minimum 12-month warranty*
PLUS the option of monthly
top-ups, up to 24 months*



Free MOT test failure cover**
covering you for £1,500



Minimum
3 months MOT



Free 24/7 breakdown cover
and roadside assistance^



Free 7-day driveway
van insurance^^



Comprehensive
multi-point vehicle check



Discounted
service plans

► View our Dealer Networks Approved Used van stock

*Warranty eligible up to 200,000 miles on approved used Mercedes-Benz Vans with less than 150,000 miles at point of sale. Top ups are to a maximum of 24 months. For full T&Cs, please speak to your preferred sales representative. ** MOT cover redeemable per 12-months warranty. £1,500 claims limit. For more information, please speak to your preferred sales representative. ^ Free for 12 months initially and renewed at each service, if serviced by MB according to service intervals for up to 30 years from when the vehicle was first registered. For a full list of exclusions and all product terms please visit mbvans.co.uk/mobilovan ^^ Available on single vehicle policies only and applicable on Vehicles up to 3.5t only. For full terms and conditions, please consult your local Dealer. Mercedes-Benz Van Insurance is a trading name of Daimler Insurance Services UK Limited. Prices are correct at time of going to press 07/2021. All prices are subject to any fiscal or legislative changes.



Approved
Used



What is an Approved Used van?

- Is no older than 6 years old
- Is eligible for one of our flexible finance plans
- Has less than 150,000 miles on the clock

► Find more information and our latest Approved Used offers

Ready to go electric?

► Find our latest Approved Used Electric offers

The Mercedes-Benz Sprinter

29

Finance options.



RETURN TO START

Get an agreement that suits you with Mercedes-Benz Finance.

At Mercedes-Benz Finance we understand what it takes to run a modern-day business. Because of this, we have a number of finance options ready to suit your business needs.

Agility

A flexible way of financing a vehicle over a fixed term. At the start of your agreement, decide on your deposit amount, expected annual mileage and how long you want the agreement to last.

- You'll have fixed regular payments meaning you can easily budget
- Payments are only based on a part of the vehicle's value, keeping your payments lower
- You're in control: At the end of the agreement you can decide to purchase your vehicle, return it, or part-exchange it for a new one.

Hire Purchase

A great choice if you want to own the vehicle outright. At the start of your agreement, decide on your deposit amount and how long you want the agreement to last, and we'll work out your monthly payments.

- The monthly payments are not based on annual mileage
- You have the option to have a balloon payment at the end of the agreement, which will lower your monthly payments
- When you've paid all the monthly repayments and Purchase Activation Fee, the vehicle is yours to keep.

Operating Lease

For those who want to drive a Mercedes-Benz over a fixed term, without the commitment of taking full ownership. Decide on your advance rental amount, expected annual mileage, and how long you want the agreement to last.

- Once all rentals are paid, you simply hand your vehicle back
- You only repay part of the vehicle's value, keeping your monthly rentals lower
- For business customers, rentals are allowable against taxable profits (proportionally).

Contract Hire

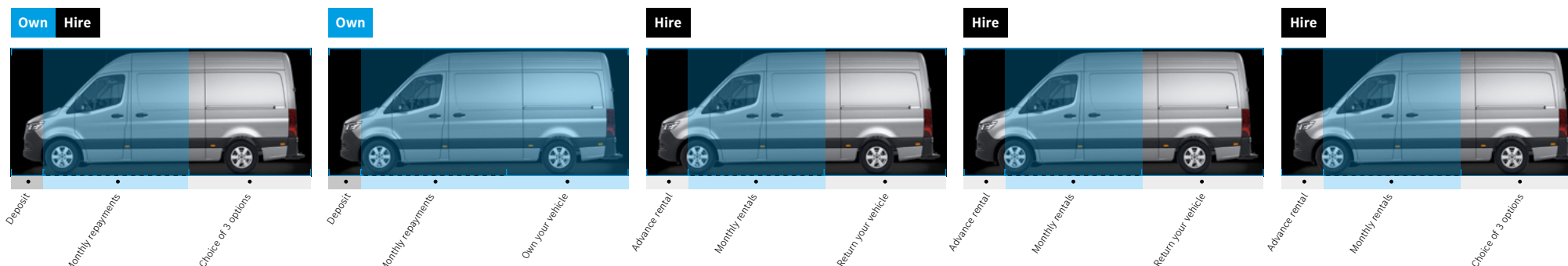
Gives you the ability to enjoy driving a Mercedes-Benz without taking on full ownership. Decide on your advance rental amount, expected annual mileage how long you want the agreement to last, and any servicing options.

- The monthly rentals include the cost of the Vehicle Excise Duty
- You only repay part of the vehicle's value, keeping your monthly rentals lower
- For business users, VAT is reclaimable depending on your usage (proportionally).

Finance Lease

Hire the vehicle for a fixed period without the option of ownership. Pay an agreed amount upfront, and decide if you wish to include a balloon payment at the end of your agreement. This lowers your monthly rentals.

- The fixed regular rentals enable you to easily budget, and are not based on annual mileage
- The vehicle is an asset on the balance sheet, therefore tax allowances may be deducted from taxable profits
- At the end of your agreement, there is an option to extend for an agreed period by paying a 'peppercorn' payment. This is equal to one month's rental per annum.



► [For more information about our finance options](#)

Service24: Demand more

The most comprehensive Aftercare package – for businesses that demand more.

Our 120-strong Dealer network works around the clock to service and maintain your vans and keep your business moving. It all adds up to more value, more flexibility and more confidence that you'll only find at an authorised Mercedes-Benz Dealer.



Flexible servicing and maintenance

Book your service online or by telephone, and as well as a standard 'drop and go' service with a courtesy van, you'll also get:

- Early bird, late night and weekend slots
- Mobile service
- Overnight service
- Collect & deliver service
- Express 1hr service
- Electric van service.

[Find out more about service and repairs](#)



Flexible ways to pay and save

With fixed, transparent national pricing there are no surprises with our services and repairs – plus you can fix, spread and reduce your service and maintenance costs, and ease your cashflow at the same time, with a payment plan.

- Pay as You Go
- ServiceCare Maintenance
- ServiceCare Flex (specifically for fleets)
- ServiceCare Complete.

[Find out more about service options](#)



3-year unlimited mileage warranty

Available on every new van, all service and maintenance – and any work required – is covered by your 3-year unlimited mileage warranty, and is only undertaken by Mercedes-Benz trained technicians using Mercedes-Benz GenuineParts.

[Find out more about warranties](#)



Free breakdown cover & roadside assistance*

Every van comes with free Europe-wide breakdown cover – MobiloVan. And with 3 years' cover on new vehicles for driver mishaps, no one goes further to keep your business moving.

- Trained technicians using only Mercedes-Benz GenuineParts
- Forward travel of load and crew is covered
- Driver mishap cover for the first 3 years, including out of charge cover or empty fuel tanks.

[Find out more about MobiloVan](#)

*For a full list of exclusions and all product terms please visit www.mercedes-benz.co.uk/vans/en/Owners/MobiloVan

The Mercedes-Benz Sprinter

31

